

**EMMPRIN (Q370) polyclonal antibody**

Catalog: BCP00715

Host: Rabbit

Reactivity: Human, Mouse, Rat

**BackGround:**

Extracellular matrix metalloproteinase inducer (EMMPRIN), also designated basigin or CD147, is involved in the regulation of matrix remodeling at the epidermal-dermal interface. EMMPRIN stimulates the production of interstitial collagenase, gelatinase A, stromelysin-1 and various metalloproteinases (MMPs) by fibroblasts. These enzymes, which are typically increased during tissue degradation and wound healing, are important factors in cancer invasion and metastasis.

**Product:**

Rabbit IgG, 1mg/ml in PBS with 0.02% sodium azide, 50% glycerol, pH7.2

**Molecular Weight:**

~ 42 kDa

**Swiss-Prot:**

P35613

**Purification&Purity:**

The antibody was affinity-purified from rabbit antiserum by affinity-chromatography using epitope-specific immunogen and the purity is > 95% (by SDS-PAGE).

**Applications:**

WB: 1:500~1:1000

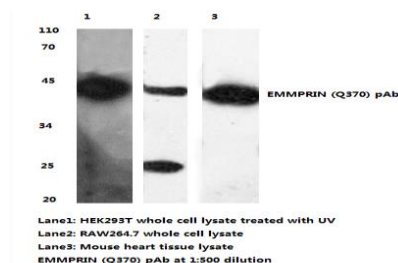
IHC: 1:50~1:200

**Storage&Stability:**

Store at 4 °C short term. Aliquot and store at -20 °C long term. Avoid freeze-thaw cycles.

**Specificity:**

EMMPRIN (Q370) polyclonal antibody detects endogenous levels of EMMPRIN protein.

**DATA:**

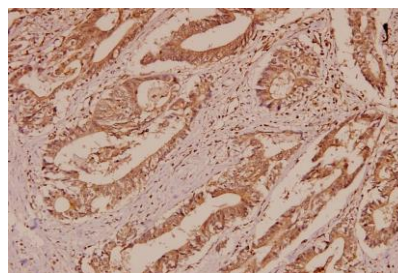
Western blot (WB) analysis of EMMPRIN (Q370) polyclonal antibody at 1:500 dilution

Lane1: HEK293T whole cell lysate

Lane2: RAW264.7 whole cell lysate

Lane3: The fetal heart tissue lysate of Mouse

Lane4: The fetal heart tissue lysate of Rat



Immunohistochemistry (IHC) analysis of EMMPRIN (Q370) pAb in paraffin-embedded human colorectal carcinoma tissue at 1:50.

**Note:**

For research use only, not for use in diagnostic procedure.