

EMR3 (Y652) polyclonal antibody

Catalog: BCP00717

Host: Rabbit

Reactivity: Human, Mouse, Rat

BackGround:

EMR3 is a member of the class B seven-span transmembrane (TM7) receptor family expressed predominantly by cells of the immune system. Family members are characterized by an extended extracellular region with a variable number of N-terminal epidermal growth factor (EGF)-like domains coupled to a TM7 domain via a mucin-like spacer domain. This gene is closely linked to the gene encoding egf-like molecule containing mucin-like hormone receptor 2 on chromosome 19. This protein may play a role in myeloid-myeloid interactions during immune and inflammatory responses. Alternative splicing of this gene results in two transcript variants encoding two distinct isoforms. EMR3 has been reported to be expressed in neutrophils, monocytes, and macrophages. ESTs have been isolated from liver/spleen and mixed libraries.

Product:

Rabbit IgG, 1mg/ml in PBS with 0.02% sodium azide, 50% glycerol, pH7.2

Molecular Weight:

~ 70 kDa

Swiss-Prot:

Q9BY15

Purification&Purity:

The antibody was affinity-purified from rabbit antiserum by affinity-chromatography using epitope-specific immunogen and the purity is > 95% (by SDS-PAGE).

Applications:

WB: 1:500~1:1000

IHC: 1:50~1:200

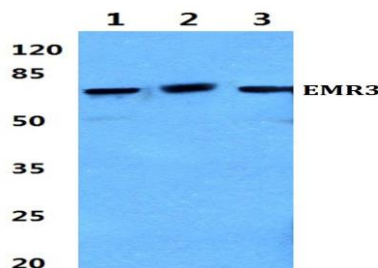
IF: 1:50~1:200

Storage&Stability:

Store at 4 °C short term. Aliquot and store at -20 °C long term. Avoid freeze-thaw cycles.

Specificity:

EMR3 (Y652) polyclonal antibody detects endogenous levels of EMR3 protein.

DATA:

Western blot (WB) analysis of EMR3 (Y652) pAb at 1:500 dilution

Lane1:H9C2 whole cell lysate(40ug)

Lane2:CT26 whole cell lysate(40ug)

Lane3:HepG2 whole cell lysate(40ug)

Lane4:MCF-7 whole cell lysate(40ug)

Lane5:K562 whole cell lysate(40ug)

Note:

For research use only, not for use in diagnostic procedure.