

**ErbB2/HER2 (D871) polyclonal antibody**

Catalog: BCP00734

Host: Rabbit

Reactivity: Human,Mouse,Rat

**BackGround:**

The EGF receptor family comprises several related receptor tyrosine kinases that are frequently overexpressed in a variety of carcinomas. Members of this receptor family include EGFR (HER1), Neu (ErbB-2, HER2), ErbB-3 (HER3), and ErbB-4 (HER4), which form either homodimers or heterodimers upon ligand binding. Neu, a glycoprotein, undergoes transactivation upon hetero-dimerization with other EGF receptor family members. Neu heterodimerization with ErbB-3 recruits heregulin, which induces phosphoinositide (PI) 3-kinase activation. Activation of Neu potentiates tumor cell motility and protease secretion and invasion, and also modulates cell cycle checkpoint function, DNA repair and apoptotic responses.

**Product:**

Rabbit IgG, 1mg/ml in PBS with 0.02% sodium azide, 50% glycerol, pH7.2

**Molecular Weight:**

~ 138,185 kDa

**Swiss-Prot:**

P04626

**Purification&Purity:**

The antibody was affinity-purified from rabbit antiserum by affinity-chromatography using epitope-specific immunogen and the purity is > 95% (by SDS-PAGE).

**Applications:**

WB: 1:500~1:1000

IHC: 1:50~1:200

**Storage&Stability:**

Store at 4 °C short term. Aliquot and store at -20 °C long term. Avoid freeze-thaw cycles.

**Specificity:**

ErbB2/HER2 (D871) polyclonal antibody detects endog-

enous levels of ErbB2/HER2 protein.

**DATA:**

HER2— —175  
—83  
—62

Western blot (WB) analysis of HER2/Neu (D871) polyclonal antibody at 1:500 dilution

Lane1:L02 whole cell lysate(40ug)

Lane2:A549 whole cell lysate(40ug)

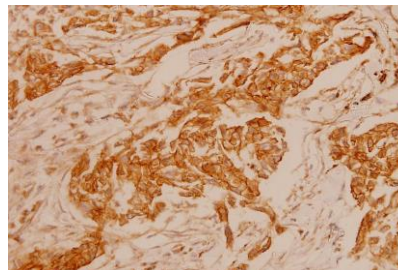
Lane3:H1792 whole cell lysate(40ug)

Lane4:COS-7 whole cell lysate(40ug)

Lane5:HEK293T whole cell lysate(40ug)

Lane6:C6 whole cell lysate(40ug)

Lane7:SP2/0 whole cell lysate(40ug)



Immunohistochemistry (IHC) analyzes of ErbB2/HER2 (D871) pAb in paraffin-embedded human breast carcinoma tissue at 1:100.

**Note:**

For research use only, not for use in diagnostic procedure.