

## ErbB-3 (S1285) polyclonal antibody

Catalog: BCP00736

Host: Rabbit

Reactivity: Human, Mouse, Rat

### BackGround:

The EGF receptor family comprises several related receptor tyrosine kinases that are frequently overexpressed in a variety of carcinomas. Members of this receptor family include EGFR (HER1), Neu (ErbB-2, HER2), ErbB-3 (HER3) and ErbB-4 (HER4), which form either homodimers or heterodimers upon ligand binding. Full length ErbB-3 is overexpressed in human mammary tumors. The ErbB-3 gene also produces several alternative variants, including a secreted form which negatively regulates heregulin stimulated ErbB activation. ErbB-3 heterodimerizes with Neu and binds heregulin in order to activate phosphoinositide (PI) 3-kinase. The recruitment and activation of PI 3-kinase occurs via its interaction with phosphorylated YXXM motifs in the carboxy terminus of ErbB-3.

### Product:

Rabbit IgG, 1mg/ml in PBS with 0.02% sodium azide, 50% glycerol, pH7.2

### Molecular Weight:

~ 148, 185 kDa

### Swiss-Prot:

P21860

### Purification&Purity:

The antibody was affinity-purified from rabbit antiserum by affinity-chromatography using epitope-specific immunogen and the purity is > 95% (by SDS-PAGE).

### Applications:

WB: 1:500~1:1000

IHC: 1:50~1:200

IF: 1:50~1:200

### Storage&Stability:

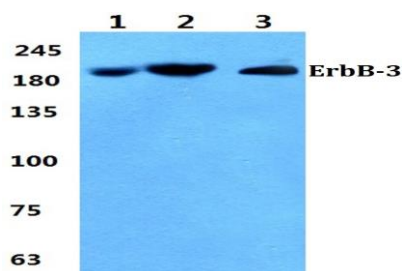
Store at 4 °C short term. Aliquot and store at -20 °C long

term. Avoid freeze-thaw cycles.

### Specificity:

ErbB-3 (S1285) polyclonal antibody detects endogenous levels of ErbB-3 protein.

### DATA:

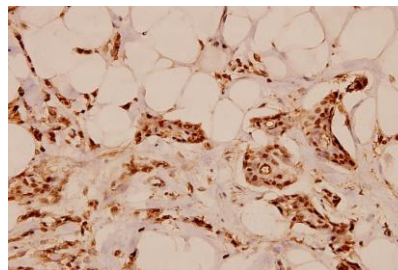


Western blot (WB) analysis of ErbB-3 (S1285) polyclonal antibody at 1:500 dilution

Lane1:MCF-7 cell lysate

Lane2:Mouse brain tissue lysate

Lane3:H9C2 cell lysate



Immunohistochemistry (IHC) analyzes of ErbB-3 (S1285) pAb in paraffin-embedded human breast carcinoma tissue at 1:100.

### Note:

For research use only, not for use in diagnostic procedure.