

eRF3a (D128) polyclonal antibody

Catalog: BCP00740

Host: Rabbit

Reactivity: Human, Mouse, Rat

BackGround:

eRF3a (eukaryotic peptide chain release factor subunit 3a), also known as GSPT1 (G1 to S phase transition 1), is a 499 amino acid protein that belongs to the GTP-binding elongation factor family and is involved in the regulation of cell growth, specifically via control of translation termination. Human eRF3a shares 94% sequence identity with its mouse counterpart, suggesting a conserved function between species. The gene encoding eRF3a maps to human chromosome 16, which encodes over 900 genes and comprises nearly 3% of the human genome. The GAN gene is located on chromosome 16 and, with mutation, may lead to giant axonal neuropathy, a nervous system disorder characterized by increasing malfunction with growth.

Product:

Rabbit IgG, 1mg/ml in PBS with 0.02% sodium azide, 50% glycerol, pH7.2

Molecular Weight:

~ 80 kDa

Swiss-Prot:

P15170

Purification&Purity:

The antibody was affinity-purified from rabbit antiserum by affinity-chromatography using epitope-specific immunogen and the purity is > 95% (by SDS-PAGE).

Applications:

WB: 1:500~1:1000

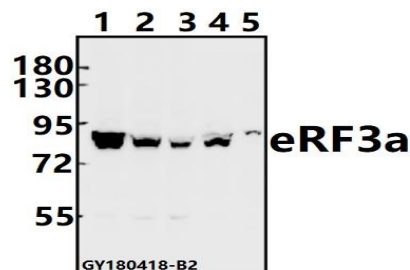
IHC: 1:50~1:200

Storage&Stability:

Store at 4 °C short term. Aliquot and store at -20 °C long term. Avoid freeze-thaw cycles.

Specificity:

eRF3a (D128) polyclonal antibody detects endogenous levels of eRF3a protein.

DATA:

Western blot (WB) analysis of eRF3a (D128) pAb at 1:500 dilution

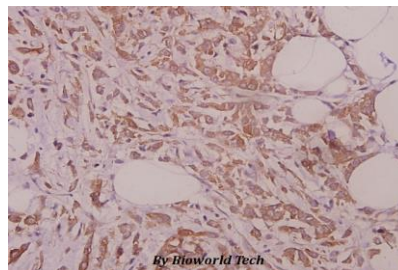
Lane1:SGC7901 whole cell lysate(40ug)

Lane2:Panc1 whole cell lysate(40ug)

Lane3:PC3 whole cell lysate(40ug)

Lane4:AML-12 whole cell lysate(40ug)

Lane5:PC12 whole cell lysate(40ug)



Immunohistochemistry (IHC) analyzes of eRF3a (D128) pAb in paraffin-embedded human colorectal carcinoma tissue at 1:50.

Note:

For research use only, not for use in diagnostic procedure.