

IL-32 (K226) polyclonal antibody

Catalog: BCP00954

Host: Rabbit

Reactivity: Human,Mouse,Rat

BackGround:

Interleukin-32 (IL-32), also designated Natural Killer (NK) cell transcript 4 (nk4), may play a role in inflammatory responses such as lymphocyte activation. IL-32 is secreted following stimulation with inflammatory cytokines such as IL-1 β and IFN- γ , and by NK cells after exposure to IL-12 and IL-18. It also induces production of IL-1 β , TNF α , MIP-2 and IL-6. Expression of IL-32 increases after activation of T cells by mitogens or activation of NK cells by IL-2. The IL-32 protein contains three potential N-myristoylation sites, a tyrosine sulfation site, an RGD cell attachment sequence and multiple putative phosphorylation sites. Human IL-32 exists as four isoforms.

Product:

Rabbit IgG, 1mg/ml in PBS with 0.02% sodium azide, 50% glycerol, pH7.2

Molecular Weight:

~ 27 kDa

Swiss-Prot:

P24001

Purification&Purity:

The antibody was affinity-purified from rabbit antiserum by affinity-chromatography using epitope-specific immunogen and the purity is > 95% (by SDS-PAGE).

Applications:

WB: 1:500~1:1000

IHC: 1:50~1:200

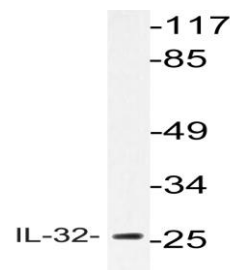
Storage&Stability:

Store at 4 °C short term. Aliquot and store at -20 °C long term. Avoid freeze-thaw cycles.

Specificity:

IL-32 (K226) polyclonal antibody detects endogenous levels of IL-32 protein.

DATA:



Western blot (WB) analysis of IL-32 (K226) pAb at 1:500 dilution

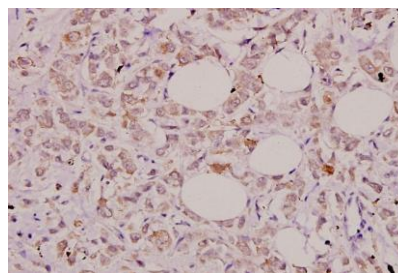
Lane1:HepG2 whole cell lysate(40ug)

Lane2:LO2 whole cell lysate(20ug)

Lane3:SGC7901 whole cell lysate(40ug)

Lane4:PMVEC whole cell lysate(40ug)

Lane5:AML-12 whole cell lysate(40ug)



Immunohistochemistry (IHC) analyzes of IL-32 (K226) pAb in paraffin-embedded human breast carcinoma tissue at 1:100.

Note:

For research use only, not for use in diagnostic procedure.