

Involucrin (P568) polyclonal antibody

Catalog: BCP00970

Host: Rabbit

Reactivity: Human, Mouse, Rat

BackGround:

Involucrin is a precursor protein of the keratinocyte cornified envelope, which is formed beneath the inner surface of the cell membrane during terminal differentiation. Involucrin first appears in the cell cytosol but ultimately becomes cross-linked to membrane proteins by transglutaminase. During keratinocyte terminal differentiation glutamine residues of involucrin become covalently cross-linked to other envelope precursors via covalent ϵ -(γ -glutamyl) lysine bonds. Moreover, its large size allows involucrin to cross-link molecules that are separated by substantial distances in the cornified envelope. These properties allow a single involucrin molecule to form multiple cross-links, in multiple spatial planes, with other envelope precursors. Involucrin is specifically expressed in Chinese hamster ovarian cells (fibroblasts), PtK2 rat kangaroo kidney cells (simple epithelial) and rat epidermal keratinocytes (stratifying squamous epithelial).

Product:

Rabbit IgG, 1mg/ml in PBS with 0.02% sodium azide, 50% glycerol, pH7.2

Molecular Weight:

~ 68 kDa

Swiss-Prot:

P07476

Purification&Purity:

The antibody was affinity-purified from rabbit antiserum by affinity-chromatography using epitope-specific immunogen and the purity is > 95% (by SDS-PAGE).

Applications:

WB: 1:500~1:1000

IHC: 1:50~1:200

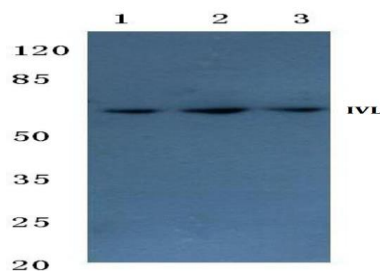
Storage&Stability:

Store at 4 °C short term. Aliquot and store at -20 °C long term. Avoid freeze-thaw cycles.

Specificity:

Involucrin (P568) polyclonal antibody detects endogenous levels of Involucrin protein.

DATA:

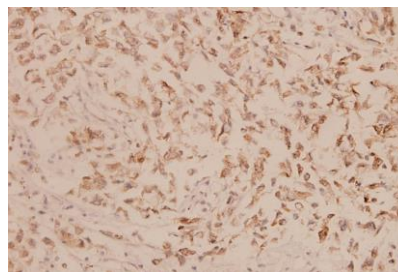


Western blot (WB) analysis of Involucrin (P568) polyclonal antibody at 1:500 dilution

Lane1: L02 whole cell lysate (40ug)

Lane2: A549 whole cell lysate (40ug)

Lane3: HepG2 whole cell lysate (40ug)



Immunohistochemistry (IHC) analysis of Involucrin (P568) pAb in paraffin-embedded human breast carcinoma tissue at 1:100.

Note:

For research use only, not for use in diagnostic procedure.