

**PITPNA polyclonal antibody**

Catalog: BCP01315

Host: Rabbit

Reactivity: Human,Mouse,Rat

**BackGround:**

This gene encodes a member of a family of lipid-binding proteins that transfer molecules of phosphatidylinositol or phosphatidylcholine between membrane surfaces. The protein is implicated in phospholipase C signaling and in the production of phosphatidylinositol 3,4,5-trisphosphate (PIP3) by phosphoinositide-3-kinase.

**Product:**

Rabbit IgG, 1mg/ml in PBS with 0.02% sodium azide, 50% glycerol, pH7.2

**Molecular Weight:**

35kDa

**Swiss-Prot:**

Q00169

**Purification&Purity:**

The antibody was affinity-purified from rabbit antiserum by affinity-chromatography using epitope-specific immunogen and the purity is > 95% (by SDS-PAGE).

**Applications:**

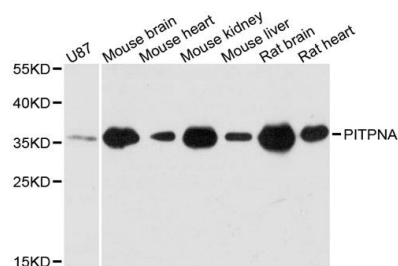
WB 1:500 - 1:2000 IF 1:50 - 1:200

**Storage&Stability:**

Store at 4 °C short term. Aliquot and store at -20 °C long term. Avoid freeze-thaw cycles.

**Specificity:**

PITPNA polyclonal antibody detects endogenous levels of PITPNA protein.

**DATA:**

Western blot analysis of extracts of various cell lines, using PITPNA antibody at 1:3000 dilution.

**Note:**

For research use only, not for use in diagnostic procedure.