

PKC δ (G499) polyclonal antibody

Catalog: BCP01328

Host: Rabbit

Reactivity: Human,Mouse,Rat

BackGround:

Protein Kinase C delta (PKC delta) is a 78 kDa member of the novel group (nPKCs: sensitive to diacylglycerol, phosphatidylserine, and phorbol esters) of the PKC family of serine/threonine kinases that are involved in a wide range of physiological processes including mitogenesis, cell survival and transcriptional regulation. PKC delta is an ubiquitously expressed PKC isozyme that has been implicated in the regulation of multiple cellular processes including cell cycle progression and apoptosis. Auto-phosphorylation of serine 664 (serine 662 in mouse and rat) contributes to PKC delta activity. Serum dependent phosphorylation of serine 664 is mediated by mTOR pathway, is protected from dephosphorylation by phosphorylated threonine 505 in the activation loop, and is implicated in prolactin signaling.

Product:

Rabbit IgG, 1mg/ml in PBS with 0.02% sodium azide, 50% glycerol, pH7.2

Molecular Weight:

~ 80 kDa

Swiss-Prot:

Q05655

Purification&Purity:

The antibody was affinity-purified from rabbit antiserum by affinity-chromatography using epitope-specific immunogen and the purity is > 100% (by SDS-PAGE).

Applications:

WB:1:500~1:1000

IHC:1:50~1:200

IP:1:10~1:100

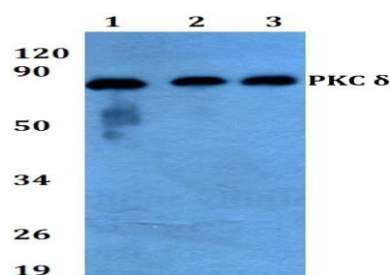
Storage&Stability:

Store at 4 °C short term. Aliquot and store at -20 °C long

term. Avoid freeze-thaw cycles.

Specificity:

PKC δ (G499) polyclonal antibody detects endogenous levels of PKC δ protein.

DATA:

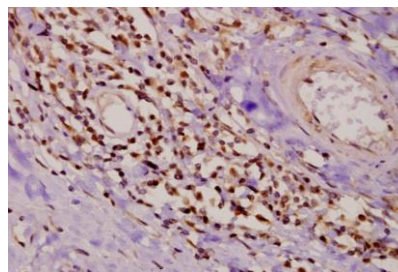
Western blot (WB) analysis of PKC δ (G499) polyclonal antibody at 1:500 dilution

Lane1:HEK293T whole cell lysate(40ug)

Lane2:L02 whole cell lysate(40ug)

Lane3:BV2 whole cell lysate(40ug)

Lane4:H9C2 whole cell lysate(40ug)



Immunohistochemistry (IHC) analyzes of PKC δ (G499) pAb in paraffin-embedded human tonsil carcinoma tissue at 1:50.

Note:

For research use only, not for use in diagnostic procedure.