

PKC ζ (P556) polyclonal antibody

Catalog: BCP01332

Host: Rabbit

Reactivity: Human, Mouse, Rat

BackGround:

Members of the protein kinase C (PKC) family play a key regulatory role in a variety of cellular functions including cell growth and differentiation, gene expression, hormone secretion and membrane function. PKCs were originally identified as serine/threonine protein kinases whose activity was dependent on calcium and phospholipids. Diacylglycerols (DAG) and tumor promoting phorbol esters bind to and activate PKC. PKCs can be subdivided into at least two major classes including conventional (c) PKC isoforms (α , β I, β II and γ) and novel (n) PKC isoforms (δ , ϵ , ζ , η and θ). Patterns of expression for each PKC isoform differs among tissues and PKC family members exhibit clear differences in their cofactor dependencies. For instance, the kinase activities of nPKC δ and ϵ are independent of Ca^{++} . On the other hand, nPKC δ and ϵ , as well as all of the cPKC members, possess phorbol ester-binding activities and kinase activities

Product:

Rabbit IgG, 1mg/ml in PBS with 0.02% sodium azide, 50% glycerol, pH7.2

Molecular Weight:

~ 67, 78 kDa

Swiss-Prot:

Q05513

Purification&Purity:

The antibody was affinity-purified from rabbit antiserum by affinity-chromatography using epitope-specific immunogen and the purity is > 95% (by SDS-PAGE).

Applications:

WB: 1:500~1:1000

IHC/IF: 1:50~1:200

IP: 1:50~1:200

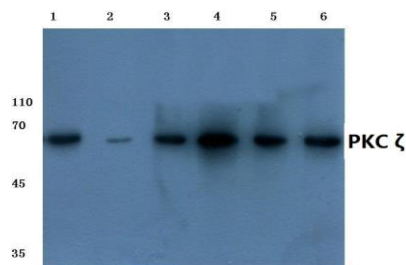
Storage&Stability:

Store at 4 °C short term. Aliquot and store at -20 °C long term. Avoid freeze-thaw cycles.

Specificity:

PKC ζ (P556) polyclonal antibody detects endogenous levels of PKC ζ protein.

DATA:



Western blot (WB) analysis of PKC ζ (P556) polyclonal antibody at 1:500 dilution

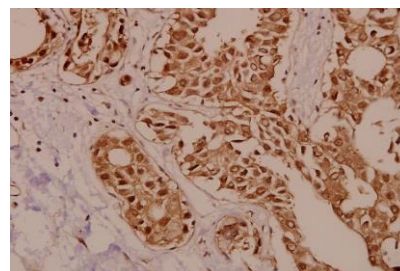
Lane1:Hela cell lysate

Lane2:NIH-3T3 cell lysate

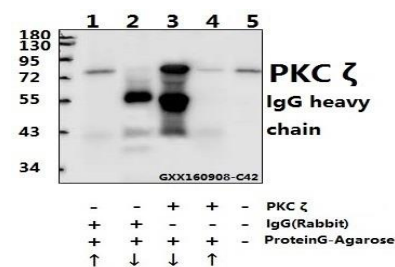
Lane3:PC12 cell lysate

Lane4:Rat kidney tissue lysate

Lane5:Rat heart tissue lysate



Immunohistochemistry (IHC) analyzes of PKC ζ (P556) pAb in paraffin-embedded human breast carcinoma tissue at 1:50.



Immunoprecipitation of the Lung tissue lysate of Mouse using PKC ζ (P556) pAb (Sephacose Bead Conjugate)#BD0048 (lane 2 and lane 3) and Nonspecific IgG Control (Sephacose Bead Conjugate)#BD0048 (lane 4 and lane 5). Lane 1 is 30% input. The western blot was probed using PKC ζ (P556) pAb. "↑" (supernatant); "↓" (deposition)

Note:

For research use only, not for use in diagnostic procedure.

