

PKC ζ (phospho-T560) polyclonal antibody

Catalog: BCP01334

Host: Rabbit

Reactivity: Human, Mouse, Rat

BackGround:

Members of the protein kinase C (PKC) family play a key regulatory role in a variety of cellular functions including cell growth and differentiation, gene expression, hormone secretion and membrane function. PKCs were originally identified as serine/threonine protein kinases whose activity was dependent on calcium and phospholipids. Diacylglycerols (DAG) and tumor promoting phorbol esters bind to and activate PKC. PKCs can be subdivided into at least two major classes including conventional (c) PKC isoforms (α , β I, β II and γ) and novel (n) PKC isoforms (δ , ϵ , ζ , η and θ). Patterns of expression for each PKC isoform differs among tissues and PKC family members exhibit clear differences in their cofactor dependencies. For instance, the kinase activities of nPKC δ and ϵ are independent of Ca^{++} . On the other hand, nPKC δ and ϵ , as well as all of the cPKC members, possess phorbol ester-binding activities and kinase activities

Product:

Rabbit IgG, 1mg/ml in PBS with 0.02% sodium azide, 50% glycerol, pH7.2

Molecular Weight:

~ 70 to 85 kDa

Swiss-Prot:

Q05513

Purification&Purity:

The antibody was affinity-purified from rabbit antiserum by affinity-chromatography using epitope-specific immunogen and the purity is > 95% (by SDS-PAGE).

Applications:

WB: 1:500~1:1000

IHC: 1:50~1:200

IP: 1:10~1:100

Storage&Stability:

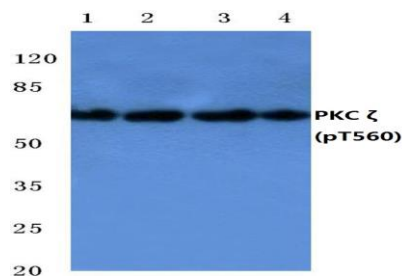
Store at 4 °C short term. Aliquot and store at -20 °C long term. Avoid freeze-thaw cycles.

Specificity:

p-PKC ζ (T560) polyclonal antibody detects endogenous levels of PKC ζ protein only when phosphorylated at

Thr560

DATA:



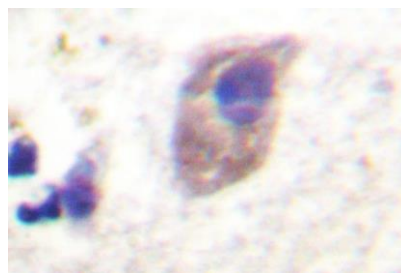
Western blot (WB) analysis of p-PKC ζ (T560) pAb at 1:500 dilution

Lane1:The Brain tissue lysate of Mouse(40ug)

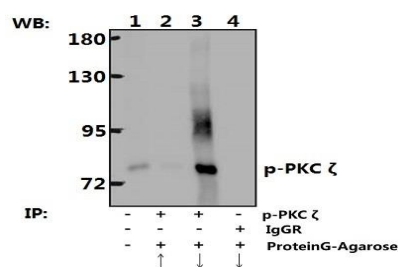
Lane2:The Brain tissue lysate of Rat(40ug)

Lane3:HEK293T whole cell lysate(20ug)

Lane4:PC3 whole cell lysate(20ug)



Immunohistochemistry (IHC) analyzes of p-PKC ζ (T560) pAb in paraffin-embedded human brain tissue.



Immunoprecipitation of Brain tissue lysate of Rat using

p-PKC ζ (T560) polyclonal antibody (Sephacrose Bead Conjugate)

#BD0048(lane 2 and lane 3) .Lane 1 is 30% input.The western blot was probed using p-PKC ζ (T560). “↑”(supernatant) ; “↓”(deposition)

Note:

For research use only, not for use in diagnostic procedure.

