

## PSCA (V71) polyclonal antibody

Catalog: BCP01375

Host: Rabbit

Reactivity: Human,Mouse,Rat

### BackGround:

Prostate stem cell antigen (PSCA) is a 123 amino acid glycosylated protein that shares homology with the Thy-1/Ly-6 family of glycosyl-phosphatidylinositol (GPI)-anchored cell surface antigens. The PSCA gene maps to chromosome 8q24.2 and transcripts are most prevalent in prostate and placenta. The gene encoding c-myc is also located on chromosome 8q and like PSCA, is overexpressed in a large number of prostate cancers. Transcripts for PSCA are also abundant in urothelial tumors, and levels of PSCA transcripts increase in confluent RT112 bladder carcinomas, suggesting that PSCA is a marker for urothelial and gastric tissue carcinogenesis. Among prostate cancer cell surface antigens, PSCA is expressed in over 80% of prostate carcinomas and correlates well to certain prostate cancer phenotypes such as prostate cancer bone metastases.

### Product:

Rabbit IgG, 1mg/ml in PBS with 0.02% sodium azide, 50% glycerol, pH7.2

### Molecular Weight:

~ 18 kDa

### Swiss-Prot:

O43653

### Purification&Purity:

The antibody was affinity-purified from rabbit antiserum by affinity-chromatography using epitope-specific immunogen and the purity is > 95% (by SDS-PAGE).

### Applications:

WB: 1:500~1:1000

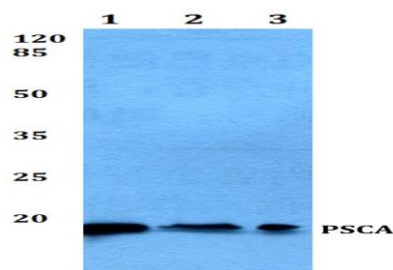
### Storage&Stability:

Store at 4 °C short term. Aliquot and store at -20 °C long term. Avoid freeze-thaw cycles.

### Specificity:

PSCA (V71) polyclonal antibody detects endogenous levels of Prostate Stem Cell Antigen protein.

### DATA:



Western blot (WB) analysis of PSCA (V71) pAb at 1:500 dilution

Lane1:Hela whole cell lysate(40ug)

Lane2:PC3 whole cell lysate(40ug)

Lane3:CT26 whole cell lysate(40ug)

Lane4:PC12 whole cell lysate(40ug)

### Note:

For research use only, not for use in diagnostic procedure.