

PSMD12 (I186) polyclonal antibody

Catalog: BCP01380

Host: Rabbit

Reactivity: Human,Mouse,Rat

BackGround:

PSMD12 (proteasome (prosome, macropain) 26S subunit, non-ATPase, 12), also known as p55 or Rpn5, is a 456 amino acid protein belonging to the proteasome subunit p55 family. PSMD12 acts as a regulatory subunit of the 26S Proteasome and is a component of the PA700 complex. PSMD12 contains one PCI domain.

Product:

Rabbit IgG, 1mg/ml in PBS with 0.02% sodium azide, 50% glycerol, pH7.2

Molecular Weight:

~ 53, 56 kDa

Swiss-Prot:

O00232

Purification&Purity:

The antibody was affinity-purified from rabbit antiserum by affinity-chromatography using epitope-specific immunogen and the purity is > 95% (by SDS-PAGE).

Applications:

WB: 1:500~1:1000

IHC: 1:50~1:200

Storage&Stability:

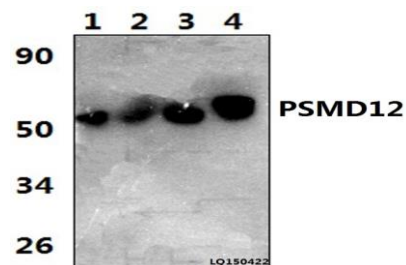
Store at 4 °C short term. Aliquot and store at -20 °C long

term. Avoid freeze-thaw cycles.

Specificity:

PSMD12 (I186) polyclonal antibody detects endogenous levels of PSMD12 protein.

DATA:



Western blot (WB) analysis of PSMD12 (I186) polyclonal antibody at 1:1000 dilution Lane1:HELA whole cell lysate(42ug) Lane2:LO2 whole cell lysate(38ug) Lane3:The Kidney tissue lysate of Rat(47ug) Lane4:The Kidney tissue lysate of Mouse(37ug)

Immunohistochemistry (IHC) analyzes of PSMD12 (I186) pAb in paraffin-embedded human breast cancer tissue.

Note:

For research use only, not for use in diagnostic procedure.