

PU.1 (R212) polyclonal antibody

Catalog: BCP01393

Host: Rabbit

Reactivity: Human,Mouse,Rat

BackGround:

The Ets transcription factor family (Ets-1, Ets-2, Erg-1–3, Elk-1, Elf-1, Elf-5, NERF, PU.1, PEA3, ERM, FEV, ER81, Fli-1, TEL, Spi-B, ESE-1, ESE-3A, Net, ABT1 and ERF) are DNA-binding proteins that influence lymphoid development and activity. The Ets family monomeric proteins bind the consensus DNA site GGA(A/T) through a unique winged helix-turn-helix motif known as the Ets domain. PU.1 (Spi-1/Spi-A), Spi-B and Spi-C are closely related Ets family members which share a conserved divergent sequence within the Ets domain that enables their binding to the non-canonical AGAA sites. PU.1 transactivates a large number of B cell genes, such as those encoding CD72, CD20 and Btk, and Spi-B enhances expression of many of these same target genes. PU.1 is expressed in a wide variety of hematopoietic cells, including B cells, early T cells, megakaryocytes, granulocytes, mast cells, immature erythrocytes and myeloid cells. Alternatively, Spi-B expression is limited to B cells and immature T cells, where expression accumulates through T lineage commitment and then is dramatically absent following the β selection checkpoint.

Product:

Rabbit IgG, 1mg/ml in PBS with 0.02% sodium azide, 50% glycerol, pH7.2

Molecular Weight:

~ 42 kDa

Swiss-Prot:

P17947

Purification&Purity:

The antibody was affinity-purified from rabbit antiserum by affinity-chromatography using epitope-specific immunogen and the purity is > 95% (by SDS-PAGE).

Applications:

WB: 1:500~1:1000

IHC: 1:50~1:200

IF: 1:50~1:200

Storage&Stability:

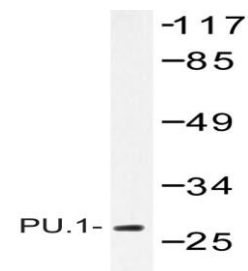
Store at 4 °C short term. Aliquot and store at -20 °C long

term. Avoid freeze-thaw cycles.

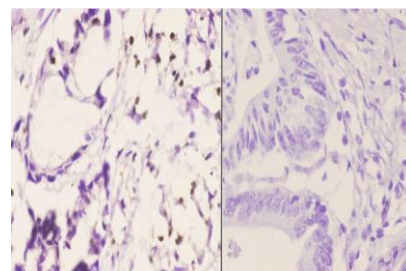
Specificity:

PU.1 (R212) polyclonal antibody detects endogenous levels of PU.1 protein.

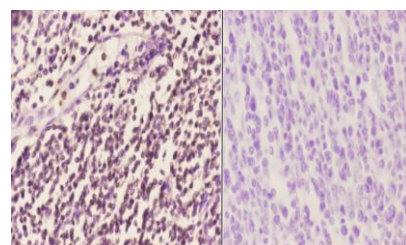
DATA:



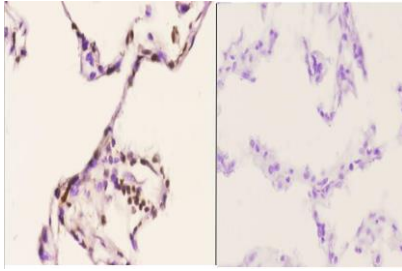
Western blot (WB) analysis of PU.1 (R212) polyclonal antibody at 1:1000 dilution Lane1:JURKAT whole cell lysate(37ug)
Lane2:THP-1 whole cell lysate(37ug)
Lane3:The blood cell tissue lysate of Rat(36ug)



Immunohistochemistry (IHC) analyzes of PU.1 (R212) pAb in paraffin-embedded human colon carcinoma tissue at 1:50. showing nucleus staining. Negative control (the right) Using PBS instead of primary antibody, secondary antibody is Goat Anti-Rabbit IgG-biotin followed by avidin-peroxidase.



Immunohistochemistry (IHC) analyzes of PU.1 (R212) pAb in paraffin-embedded human tonsil carcinoma tissue at 1:50. showing nucleus staining. Negative control (the right) Using PBS instead of primary antibody, secondary antibody is Goat Anti-Rabbit IgG-biotin followed by avidin-peroxidase.



Immunohistochemistry (IHC) analyzes of PU.1 (R212) pAb in paraffin-embedded human lung carcinoma tissue at 1:50, showing nucleus staining. Negative control (the right) Using PBS instead of primary antibody, secondary antibody is Goat Anti-Rabbit IgG-biotin followed by avidin-peroxidase.

Note:

For research use only, not for use in diagnostic procedure.