

PYK2 (R875) polyclonal antibody

Catalog: BCP01397

Host: Rabbit

Reactivity: Human,Mouse,Rat

BackGround:

Pyk2 is a protein tyrosine kinase related to Focal Adhesion Kinase (p125 FAK). Pyk2 is highly expressed in the central nervous system. It is phosphorylated on tyrosine residues in response to various stimuli that elevate intracellular calcium concentration, as well as by protein kinase C activation.

Product:

Rabbit IgG, 1mg/ml in PBS with 0.02% sodium azide, 50% glycerol, pH7.2

Molecular Weight:

~ 116 kDa

Swiss-Prot:

Q14289

Purification&Purity:

The antibody was affinity-purified from rabbit antiserum by affinity-chromatography using epitope-specific immunogen and the purity is > 95% (by SDS-PAGE).

Applications:

WB: 1:500~1:1000

IHC: 1:50~1:200

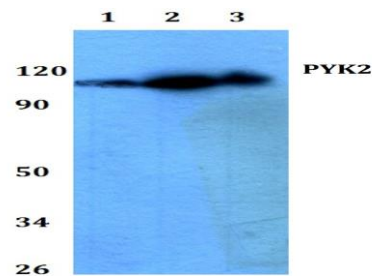
Storage&Stability:

Store at 4 °C short term. Aliquot and store at -20 °C long term. Avoid freeze-thaw cycles.

Specificity:

PYK2 (R875) polyclonal antibody detects endogenous levels of PYK2 protein.

DATA:



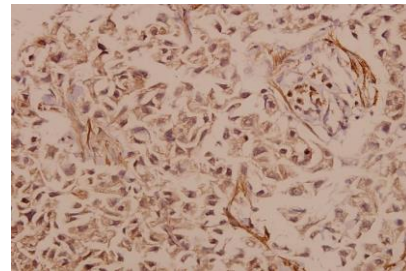
Western blot (WB) analysis of PYK2 (R875) pAb at 1:500 dilution

Lane1:C6 whole cell lysate(40ug)

Lane2:The Brain tissue lysate of Mouse(40ug)

Lane3:MCF-7 whole cell lysate(40ug)

Lane4:A375 whole cell lysate(40ug)



Immunohistochemistry (IHC) analyzes of PYK2 (R875) pAb in paraffin-embedded human breast carcinoma tissue at 1:50.

Note:

For research use only, not for use in diagnostic procedure.