

RAB35 polyclonal antibody

Catalog: BCP01401

Host: Rabbit

Reactivity: Human,Mouse,Rat

BackGround:

The Ras-related superfamily of guanine nucleotide binding proteins includes the R-Ras, Rap, Ral/Rec and Rho/Rab subfamilies, all of which are thought to play an important role in either endocytosis or in biosynthetic protein transport. The process of transporting newly synthesized proteins from the endoplasmic reticulum (ER) to various stacks of the Golgi complex and to secretory vesicles involves the movement of carrier vesicles and requires Rab protein function. Rab 35, also known as Rab 1C or RAY, is a 201 amino acid lipidanchored protein that is thought to function as a GTPase, playing a role in exocytotic and endocytotic pathways and functioning as an important factor in cytokinesis. Rab 35 is expressed ubiquitously and is encoded by a gene that maps to human chromosome 12, which houses over 1,100 genes and comprises approximately 4.5% of the human genome.

Product:

Rabbit IgG, 1mg/ml in PBS with 0.02% sodium azide, 50% glycerol, pH7.2

Molecular Weight:

~ 23 kDa

Swiss-Prot:

Q15286

Purification&Purity:

The antibody was affinity-purified from rabbit antiserum by affinity-chromatography using epitope-specific immunogen and the purity is > 95% (by SDS-PAGE).

Applications:

WB: 1:500~1:1000

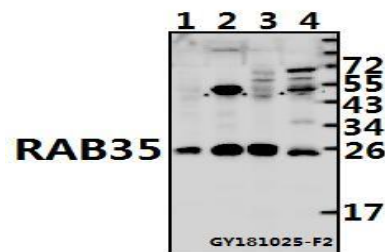
Storage&Stability:

Store at 4 °C short term. Aliquot and store at -20 °C long term. Avoid freeze-thaw cycles.

Specificity:

RAB35 polyclonal antibody detects endogenous levels of RAB35 protein.

DATA:



Western blot (WB) analysis of RAB35 pAb at 1:500 dilution

Lane1:HeLa whole cell lysate(40ug)

Lane2:L02 whole cell lysate(40ug)

Lane3:The Testis tissue lysate of Rat(40ug)

Lane4:The Testis tissue lysate of Mouse(40ug)

Note:

For research use only, not for use in diagnostic procedure.