

Rad21 (D548) polyclonal antibody

Catalog: BCP01405

Host: Rabbit

Reactivity: Human, Mouse, Rat

BackGround:

Rad21 is one of the major cohesin subunits that holds sister chromatids together until anaphase, when proteolytic cleavage by separase, a caspase-like enzyme, allows chromosomal separation. Rad21 interacts with Rec8 to form a cohesin complex that functions in sister chromatid alignment. Rad21 is also involved in the repair of double-strand breaks in DNA and is essential for mitotic growth. Rad21 undergoes a C-terminal cleavage induced by diverse stimuli right before apoptosis. The cleavage product migrates to the cytoplasm and is involved in early events in the apoptotic pathway and it amplifies the cell death signal in a positive-feedback manner.

Product:

Rabbit IgG, 1mg/ml in PBS with 0.02% sodium azide, 50% glycerol, pH7.2

Molecular Weight:

~ 130 kDa

Swiss-Prot:

O60216

Purification&Purity:

The antibody was affinity-purified from rabbit antiserum by affinity-chromatography using epitope-specific immunogen and the purity is > 95% (by SDS-PAGE).

Applications:

WB: 1:500~1:1000

IHC: 1:50~1:200

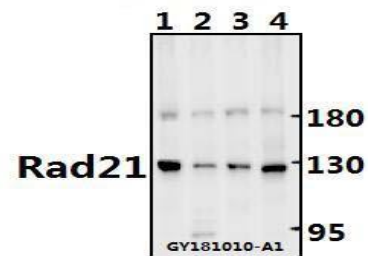
Storage&Stability:

Store at 4 °C short term. Aliquot and store at -20 °C long term. Avoid freeze-thaw cycles.

Specificity:

Rad21 (D548) polyclonal antibody detects endogenous levels of Rad21 protein.

DATA:



Western blot (WB) analysis of Rad21 (D548) pAb at 1:500 dilution

Lane1:C6 whole cell lysate(40ug)

Lane2:3T3-L1 whole cell lysate(40ug)

Lane3:HeLa whole cell lysate(40ug)

Lane4:HEK293T whole cell lysate(40ug)

Note:

For research use only, not for use in diagnostic procedure.