

Rad50 (A708) polyclonal antibody

Catalog: BCP01406

Host: Rabbit

Reactivity: Human,Mouse,Rat

BackGround:

Rad52 family members (Rad50, Rad51B/C/D, Rad52, Rad54, MRE11) mediate DNA double-strand break repair (DSBR) for DNA damage that otherwise could cause cell death, mutation or neoplastic transformation. Rad51 (RECA, BRCC5) interacts with BRCA1 and BRCA2 to influence subcellular localization and cellular response to DNA damage. BRCA2 inactivation may be a key event leading to genomic instability and tumorigenesis from deregulation of Rad51. Rad52 forms a heptameric ring that binds single-stranded DNA ends and catalyzes DNA-DNA interaction necessary for the annealing of complementary strands.

Product:

Rabbit IgG, 1mg/ml in PBS with 0.02% sodium azide, 50% glycerol, pH7.2

Molecular Weight:

~ 153 kDa

Swiss-Prot:

Q92878

Purification&Purity:

The antibody was affinity-purified from rabbit antiserum by affinity-chromatography using epitope-specific immunogen and the purity is > 95% (by SDS-PAGE).

Applications:

WB: 1:500~1:1000

IHC: 1:50~1:200

Storage&Stability:

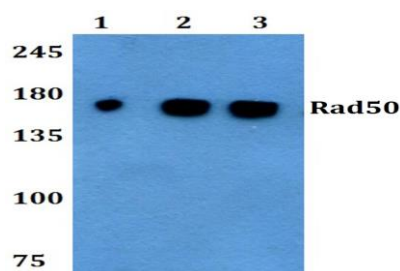
Store at 4 °C short term. Aliquot and store at -20 °C long

term. Avoid freeze-thaw cycles.

Specificity:

Rad50 (A708) polyclonal antibody detects endogenous levels of Rad50 protein.

DATA:



Western blot (WB) analysis of Rad50 (A708) polyclonal antibody at 1:500 dilution

Lane1:786-O whole cell lysate(40ug)

Lane2:U-87MG whole cell lysate(40ug)

Lane3:SGC-7901 whole cell lysate(40ug)

Lane4:SK-OVCAR3 whole cell lysate(40ug)

Lane5:The Testis tissue lysate of Mouse(40ug)

Lane6:The Testis tissue lysate of Rat(40ug)

Lane7:C6 whole cell lysate(40ug)

Immunohistochemistry (IHC) analyzes of Rad50 (A708) pAb in paraffin-embedded human breast cancer tissue.

Note:

For research use only, not for use in diagnostic procedure.