

Radixin polyclonal antibody

Catalog: BCP01408

Host: Rabbit

Reactivity: Human,Mouse,Rat

BackGround:

Ezrin, Moesin and Radixin belong to a family of highly homologous actin-associated proteins that are localized just beneath the plasma membrane. The proteins are believed to be involved in the mediation of interactions between cytoskeletal and membrane proteins. Ezrin serves as a major cytoplasmic substrate of various protein-tyrosine kinases, including the epidermal growth factor receptor. Ezrin has also been identified as a cAMP-dependent protein kinase (A-kinase) anchoring protein and designated AKAP78. Moesin and Radixin share over 70% homology with Ezrin and are co-expressed within various cell types. Despite the high degree of homology, the three proteins exhibit a distinct receptor-specific pattern of phosphorylation.

Product:

Rabbit IgG, 1mg/ml in PBS with 0.02% sodium azide, 50% glycerol, pH7.2

Molecular Weight:

~ 68, 71 kDa

Swiss-Prot:

P35241

Purification&Purity:

The antibody was affinity-purified from rabbit antiserum by affinity-chromatography using epitope-specific immunogen and the purity is > 95% (by SDS-PAGE).

Applications:

WB: 1:500~1:1000

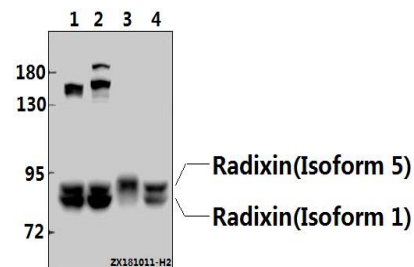
Storage&Stability:

Store at 4 °C short term. Aliquot and store at -20 °C long term. Avoid freeze-thaw cycles.

Specificity:

Radixin polyclonal antibody detects endogenous levels of Radixin protein.

DATA:



Western blot (WB) analysis of Radixin (W175) pAb at 1:2000 dilution

Lane1:SGC7901 whole cell lysate(40ug)

Lane2:L02 whole cell lysate(40ug)

Lane3:The Liver tissue lysate of Rat(40ug)

Lane4:The Kidney tissue lysate of Mouse(40ug)

Note:

For research use only, not for use in diagnostic procedure.