

Rb (phospho-S795) polyclonal antibody

Catalog: BCP01423

Host: Rabbit

Reactivity: Human

BackGround:

The retinoblastoma tumor suppressor gene product, known as Rb or pRb, regulates differentiation, apoptosis and cell cycle control by coordinating the cell cycle, at G1/S, with transcriptional machinery that includes the heterodimeric E2F family. During G1, cyclin D (D1, 2, 3)-dependent kinase-mediated phosphorylation of Rb at Ser 795 marks the conversion of Rb from a transcriptionally repressive, hypophosphorylated state to an inactive, phosphorylated state, which may be sustained through mitosis by differential phosphorylation of up to 16 putative serine or threonine residues, including Ser 249/Thr 252, Thr 373, Thr 356, Ser 780, Ser 807/Ser 811 and Thr 821/Thr 826.

Product:

Rabbit IgG, 1mg/ml in PBS with 0.02% sodium azide, 50% glycerol, pH7.2

Molecular Weight:

~ 106 kDa

Swiss-Prot:

P06400

Purification&Purity:

The antibody was affinity-purified from rabbit antiserum by affinity-chromatography using epitope-specific immunogen and the purity is > 95% (by SDS-PAGE).

Applications:

WB: 1:500~1:1000

IHC: 1:50~1:200

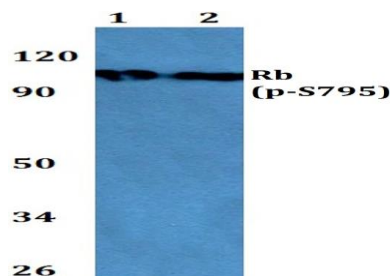
Storage&Stability:

Store at 4 °C short term. Aliquot and store at -20 °C long term. Avoid freeze-thaw cycles.

Specificity:

p-Rb (S795) polyclonal antibody detects endogenous levels of Rb protein only when phosphorylated at Ser795

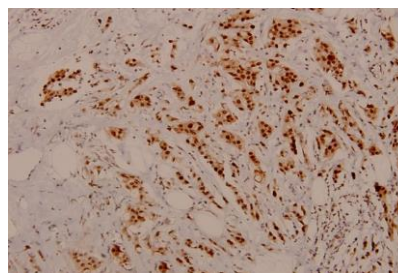
DATA:



Western blot (WB) analysis of p-Rb (S795) pAb at 1:500 dilution

Lane1:SGC7901 whole cell lysate(40ug)

Lane2:SGC7901 treated with PBS (1 xPBS,PH7.4) for 3 hours whole cell lysate(40ug)



Immunohistochemistry (IHC) analyzes of p-Rb (S795) pAb in paraffin-embedded human breast carcinoma tissue at 1:100.

Note:

For research use only, not for use in diagnostic procedure.