

RBAK (W22) polyclonal antibody

Catalog: BCP01425

Host: Rabbit

Reactivity: Human,Mouse,Rat

BackGround:

RB-associated KRAB zinc finger protein, may repress E2F-dependent transcription. May promote AR-dependent transcription.

Product:

Rabbit IgG, 1mg/ml in PBS with 0.02% sodium azide, 50% glycerol, pH7.2

Molecular Weight:

~ 83 kDa

Swiss-Prot:

Q9NYW8

Purification&Purity:

The antibody was affinity-purified from rabbit antiserum by affinity-chromatography using epitope-specific immunogen and the purity is > 95% (by SDS-PAGE).

Applications:

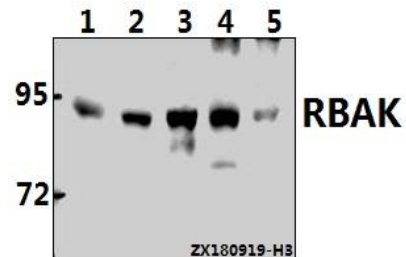
WB: 1:500~1:1000

Storage&Stability:

Store at 4 °C short term. Aliquot and store at -20 °C long term. Avoid freeze-thaw cycles.

Specificity:

RBAK (W22) polyclonal antibody detects endogenous levels of RBAK protein.

DATA:

Western blot (WB) analysis of RBAK (W22) polyclonal antibody at 1:500 dilution

Lane1:L02 whole cell lysate(40ug)

Lane2:H1792 whole cell lysate(40ug)

Lane3:HEK293T whole cell lysate(40ug)

Lane4:PC12 whole cell lysate(40ug)

Lane5:AML-12 whole cell lysate(40ug)

Note:

For research use only, not for use in diagnostic procedure.