

## RCL (I42) polyclonal antibody

Catalog: BCP01426

Host: Rabbit

Reactivity: Human

**BackGround:**

RCL was identified on the basis of its stimulation by c-Myc protein. The latter is a transcription factor that participates in the regulation of cell proliferation, differentiation, and apoptosis. The exact function of this gene is not known but studies in rat suggest a role in cellular proliferation and c-Myc-mediated transformation.

**Product:**

Rabbit IgG, 1mg/ml in PBS with 0.02% sodium azide, 50% glycerol, pH7.2

**Molecular Weight:**

~ 22 kDa

**Swiss-Prot:**

O43598

**Purification&Purity:**

The antibody was affinity-purified from rabbit antiserum by affinity-chromatography using epitope-specific immunogen and the purity is > 95% (by SDS-PAGE).

**Applications:**

WB: 1:500~1:1000

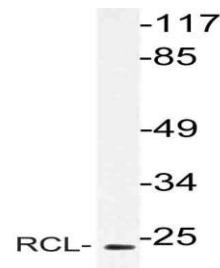
IP: 1:10-100

**Storage&Stability:**

Store at 4 °C short term. Aliquot and store at -20 °C long term. Avoid freeze-thaw cycles.

**Specificity:**

RCL (I42) polyclonal antibody detects endogenous levels of RCL protein.

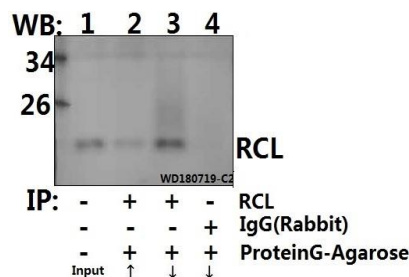
**DATA:**

Western blot (WB) analysis of RCL (I42) pAb at 1:500 dilution

Lane1:Jurkat whole cell lysate(40ug)

Lane2:HCT116 whole cell lysate(40ug)

Lane3:HEK293T whole cell lysate(40ug)



Immunoprecipitation of HEK293T cell lysate using RCL (I42) pAb

(Sepharose Bead Conjugate) #BD0048(lane 2 and lane 3) and Nonspecific IgG Control (Sepharose Bead Conjugate)#BD0048 (lane 4) .Lane

1 is 30% input. The western blot was probed using RCL (I42). “ ↑ ”

(supernatant) ; “ ↓ (deposition)

**Note:**

For research use only, not for use in diagnostic procedure.