

Rev-Erb α polyclonal antibody

Catalog: BCP01428

Host: Rabbit

Reactivity: Human,Pig

BackGround:

Reverse orientation c-erbA gene α (Rev-erb α , EAR-1, or NR1D1) is a widely expressed member of the orphan nuclear receptor family of proteins. Rev-erb α is highly expressed in adipose tissue, skeletal muscle, brain and liver, and regulates cellular proliferation and differentiation. Expression increases during differentiation in adipocytes and ectopic expression of Rev-erb α potentiates the adipocyte differentiation of 3T3-L1 cells. In addition, expression oscillates with circadian rhythm in liver cells and Rev-erb α regulates expression of BMAL1, ApoA-I and ApoC-III, all key regulators of circadian rhythm. Phosphorylation of Rev-erb α Ser55 and Ser59 by GSK-3 β appears to stabilize Rev-erb α protein levels and is important for synchronizing and maintaining the circadian clock. Rev-erb α also regulates inflammation by targeting the NF- κ B responsive genes IL-6 and COX-2. Rev-erb α lacks the activation function 2 domain required for ligand-dependent activation of transcription by other members of the nuclear receptor family; thus it behaves as a constitutive repressor protein, recruiting the nuclear receptor co-repressor (N-CoR)/HDAC3 complex to target genes to repress transcription.

Product:

Rabbit IgG, 1mg/ml in PBS with 0.02% sodium azide, 50% glycerol, pH7.2

Molecular Weight:

~ 78 kDa

Swiss-Prot:

P20393

Purification&Purity:

The antibody was affinity-purified from rabbit antiserum by affinity-chromatography using epitope-specific immunogen and the purity is > 95% (by SDS-PAGE).

Applications:

WB: 1:5000~1:10000

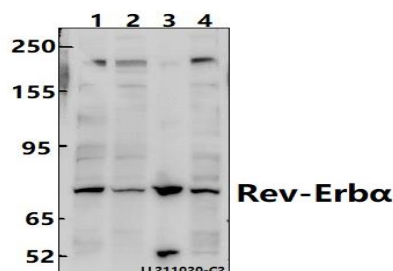
Storage&Stability:

Store at 4 °C short term. Aliquot and store at -20 °C long term. Avoid freeze-thaw cycles.

Specificity:

Rev-Erb α polyclonal antibody detects endogenous levels of Rev-Erb α protein.

DATA:



Western blot (WB) analysis of Rev-Erb α polyclonal antibody at 1:10000 dilution

Lane1:U-87MG whole cell lysate(40ug)

Lane2:A549 whole cell lysate(40ug)

Lane3:The Lung tissue lysate of Pig(40ug)

Lane4:HepG2 whole cell lysate(40ug)

Note:

For research use only, not for use in diagnostic procedure.