

RGS16 (phospho-Y168) polyclonal antibody

Catalog: BCP01429

Host: Rabbit

Reactivity: Mouse, Rat

BackGround:

The protein encoded by this gene belongs to the 'regulator of G protein signaling' family. It inhibits signal transduction by increasing the GTPase activity of G protein alpha subunits. It also may play a role in regulating the kinetics of signaling in the phototransduction cascade.

Product:

Rabbit IgG, 1mg/ml in PBS with 0.02% sodium azide, 50% glycerol, pH7.2

Molecular Weight:

~ 23 kDa

Swiss-Prot:

O15492

Purification&Purity:

The antibody was affinity-purified from rabbit antiserum by affinity-chromatography using epitope-specific immunogen and the purity is > 95% (by SDS-PAGE).

Applications:

WB: 1:500~1:1000

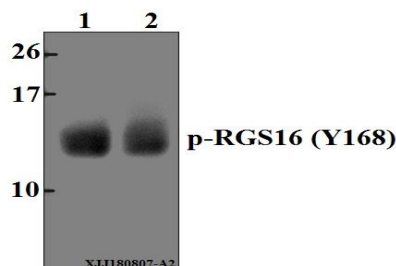
Storage&Stability:

Store at 4 °C short term. Aliquot and store at -20 °C long

term. Avoid freeze-thaw cycles.

Specificity:

RGS16 (phospho-Y168) polyclonal antibody detects endogenous levels of RGS16 protein when phosphorylated at Tyr168.

DATA:

Western blot (WB) analysis of p-RGS16 (Y168) pAb at 1:500 dilution

Lane1: The Eye tissue lysate of Mouse (40 µg)

Lane2: The Eye tissue lysate of Rat (40 µg)

Note:

For research use only, not for use in diagnostic procedure.