

## Rock-1 (N311) polyclonal antibody

Catalog: BCP01442

Host: Rabbit

Reactivity: Human, Mouse, Rat

### BackGround:

Rho proteins function as molecular switches that are able to turn cytokinesis on and off. Although little is known about signaling downstream of Rho, a host of putative Rho effector proteins have been described, including rhotilin, Rhotekin, citron and the serine/threonine kinase, protein kinase N. Two additional Rho-activated serine/threonine kinases have been described, designated Rock-1 and Rock-2 (also referred to as Roka) for Rho-associated coil-containing protein kinase. Rock-1 and Rock-2 share a structural similarity with myotonic dystrophy kinase.

### Product:

Rabbit IgG, 1mg/ml in PBS with 0.02% sodium azide, 50% glycerol, pH7.2

### Molecular Weight:

~ 158 kDa

### Swiss-Prot:

Q13464

### Purification&Purity:

The antibody was affinity-purified from rabbit antiserum by affinity-chromatography using epitope-specific immunogen and the purity is > 95% (by SDS-PAGE).

### Applications:

WB: 1:500~1:1000

IHC: 1:50~1:200

IF: 1:50~1:200

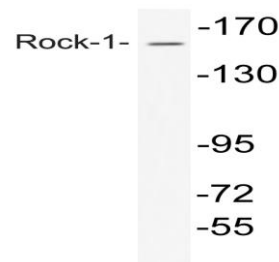
### Storage&Stability:

Store at 4 °C short term. Aliquot and store at -20 °C long term. Avoid freeze-thaw cycles.

### Specificity:

Rock-1 (N311) polyclonal antibody detects endogenous levels of Rock-1 protein.

### DATA:



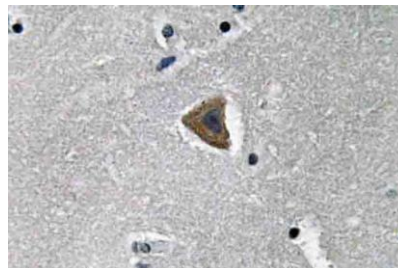
Western blot (WB) analysis of Rock-1 (N311) pAb at 1:500 dilution

Lane1:HCT116 whole cell lysate(40ug)

Lane2:HEK293T whole cell lysate(40ug)

Lane3:CT26 whole cell lysate(40ug)

Lane4:PMVEC whole cell lysate(40ug)



Immunohistochemistry (IHC) analyzes of Rock-1 (N311) pAb in paraffin-embedded human brain tissue.

### Note:

For research use only, not for use in diagnostic procedure.