

## Rock-1 polyclonal antibody

Catalog: BCP01444

Host: Rabbit

Reactivity: Human,Mouse,Rat

### BackGround:

ROCK (Rho-associated kinase), a family of serine/threonine kinases, is an important downstream target of Rho-GTPase and plays an important role in Rho-mediated signaling. Two isoforms of ROCK have been identified: ROCK1 and ROCK2. ROCK is composed of N-terminal catalytic, coiled-coil, and C-terminal PH (pleckstrin homology) domains. The C-terminus of ROCK negatively regulates its kinase activity. Caspase-3-induced cleavage of ROCK1 and direct cleavage of ROCK2 by granzyme B (grB) activates ROCK and leads to phosphorylation of myosin light chain and inhibition of myosin phosphatase. This phosphorylation may account for the mechanism by which Rho regulates cytokinesis, cell motility, cell membrane blebbing during apoptosis, and smooth muscle contraction.

### Product:

Rabbit IgG, 1mg/ml in PBS with 0.02% sodium azide, 50% glycerol, pH7.2.

### Molecular Weight:

~ 180kDa

### Swiss-Prot:

Q13464

### Purification&Purity:

The antibody was affinity-purified from rabbit antiserum by affinity-chromatography using epitope-specific immunogen and the purity is > 95% (by SDS-PAGE).

### Applications:

WB: 1:5000~1:10000

IP:1:2000~1:8000

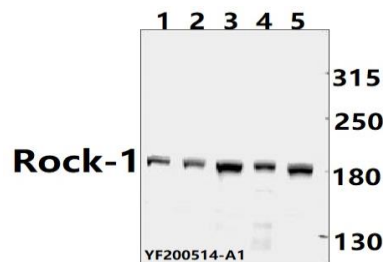
### Storage&Stability:

Store at 4 °C short term. Aliquot and store at -20 °C long term. Avoid freeze-thaw cycles.

### Specificity:

Rock-1 polyclonal antibody detects endogenous levels of Rock-1 protein.

### DATA:



Western blot (WB) analysis of Rock-1 polyclonal antibody at 1:5000 dilution

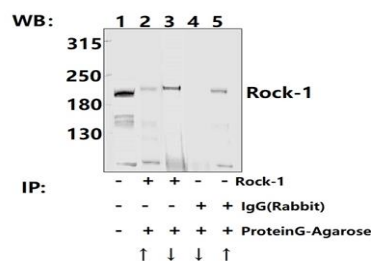
Lane1:PC12 whole cell lysate(40ug)

Lane2:CT-26 whole cell lysate(40ug)

Lane3:HEK293T whole cell lysate(40ug)

Lane4:HCT116 whole cell lysate(40ug)

Lane5:Hela whole cell lysate(40ug)



Immunoprecipitation - Rock-1 Polyclonal Antibody

### Note:

For research use only, not for use in diagnostic procedure.