

Rock-2 polyclonal antibody

Catalog: BCP01445

Host: Rabbit

Reactivity: Human,Mouse,Rat

BackGround:

ROCK (Rho-associated kinase), a family of serine/threonine kinases, is an important downstream target of Rho-GTPase and plays an important role in Rho-mediated signaling. Two isoforms of ROCK have been identified: ROCK1 and ROCK2. ROCK is composed of N-terminal catalytic, coiled-coil, and C-terminal PH (pleckstrin homology) domains. The C-terminus of ROCK negatively regulates its kinase activity. Caspase-3-induced cleavage of ROCK1 and direct cleavage of ROCK2 by granzyme B (grB) activates ROCK and leads to phosphorylation of myosin light chain and inhibition of myosin phosphatase. This phosphorylation may account for the mechanism by which Rho regulates cytokinesis, cell motility, cell membrane blebbing during apoptosis, and smooth muscle contraction.

Product:

Rabbit IgG, 1mg/ml in PBS with 0.02% sodium azide, 50% glycerol, pH7.2.

Molecular Weight:

~ 180kDa

Swiss-Prot:

O75116

Purification&Purity:

The antibody was affinity-purified from rabbit antiserum by affinity-chromatography using epitope-specific immunogen and the purity is > 95% (by SDS-PAGE).

Applications:

WB: 1:5000~1:10000

IP:1:2000~1:8000

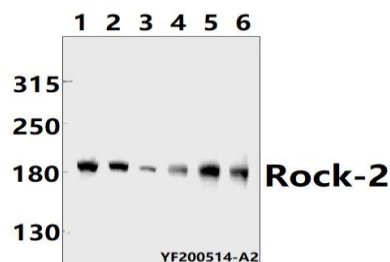
Storage&Stability:

Store at 4 °C short term. Aliquot and store at -20 °C long term. Avoid freeze-thaw cycles.

Specificity:

Rock-2 polyclonal antibody detects endogenous levels of Rock-2 protein.

DATA:



Western blot (WB) analysis of Rock-2 polyclonal antibody at 1:10000 dilution

Lane1:MCF-7 whole cell lysate(40ug)

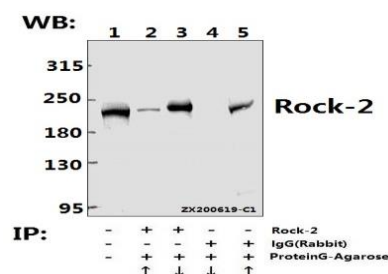
Lane2:The brain tissue lysate of Rat(40ug)

Lane3:The brain tissue lysate of Mouse(40ug)

Lane4:U-87MG whole cell lysate(40ug)

Lane5:H1792 whole cell lysate(40ug)

Lane6:SGC7901 whole cell lysate(40ug)



Immunoprecipitation - Rock-2 Polyclonal Antibody

Note:

For research use only, not for use in diagnostic procedure.