

Ron (phospho-S1394) polyclonal antibody

Catalog: BCP01446

Host: Rabbit

Reactivity: Human

BackGround:

Ron is a member of the Met protooncogene family of receptor tyrosine kinases, which also includes Stk, c-Met, and c-Sea. The functional Ron is a heterodimer composed of a 40 kDa α chain and a 150 kDa β chain. Ron is initially synthesized in the cells as a single-chain, pro-Ron precursor that is cleaved into the two active chains. The α chain is completely extracellular, whereas the β chain traverses the cell membrane and contains the intracellular tyrosine kinase and regulatory elements. Ron mediates multiple signaling cascades that involve cell motility, adhesion, proliferation, and apoptosis. The signaling pathways activated downstream of Ron include the ras/mitogen-activated protein kinase (MAPK), phosphatidylinositol-3 kinase (PI3K)/Akt, and focal adhesion kinase (FAK) pathways. Ron activation can also significantly increase c-Src activity, a signaling intermediate involved in cell cycle progression, motility, angiogenesis and survival. The function of Ron has been shown to be important for embryological development as well as implicated in the progression and metastasis of tumors.

Product:

Rabbit IgG, 1mg/ml in PBS with 0.02% sodium azide, 50% glycerol, pH7.2

Molecular Weight:

~ 145, 150 kDa

Swiss-Prot:

Q04912

Purification&Purity:

The antibody was affinity-purified from rabbit antiserum by affinity-chromatography using epitope-specific immunogen and the purity is > 95% (by SDS-PAGE).

Applications:

WB: 1:500~1:1000

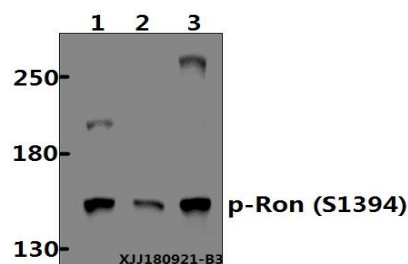
Storage&Stability:

Store at 4 °C short term. Aliquot and store at -20 °C long term. Avoid freeze-thaw cycles.

Specificity:

Ron (phospho-S1394) polyclonal antibody detects endogenous levels of Ron protein only when phosphorylated at Ser1394.

DATA:



Western blot (WB) analysis of Ron (phospho-S1394) polyclonal antibody at 1:500 dilution

Lane1:A549 whole cell lysate(40 μ g)

Lane2:SK-OVCAR3 whole cell lysate(40 μ g)

Lane3:MCF-7 whole cell lysate(40 μ g)

Note:

For research use only, not for use in diagnostic procedure.