

ROR γ polyclonal antibody

Catalog: BCP01449

Host: Rabbit

Reactivity: Human

BackGround:

The nuclear orphan receptors ROR α and ROR γ are members of the nuclear hormone receptor superfamily. Members of this family acts by directly associating with DNA sequences known as hormone response elements (HREs) and typically bind DNA as either homo- or heterodimers. ROR α and ROR γ are unique in that they bind DNA as monomers. ROR α has multiple isoforms that share common DNA and putative ligand-binding domains, but differ in their amino terminal domains, which are generated by alternative RNA processing. ROR γ comprises a 560 amino acid protein that shares 50% amino acid identity with ROR α and is most highly expressed in skeletal muscle. Although these proteins are considered “orphan receptors,” due to a lack of defined ligands, experimental evidence has shown that melatonin may be the natural ligand for these nuclear receptors. The gene encoding ROR α maps to chromosome 15q22.2 and the gene encoding ROR γ maps to chromosome 1q21.3.

Product:

Rabbit IgG, 1mg/ml in PBS with 0.02% sodium azide, 50% glycerol, pH7.2

Molecular Weight:

~ 60 kDa

Swiss-Prot:

P51449

Purification&Purity:

The antibody was affinity-purified from rabbit antiserum by affinity-chromatography using epitope-specific immunogen and the purity is > 95% (by SDS-PAGE).

Applications:

WB: 1:1000~1:2000

IHC: 1:50~1:200

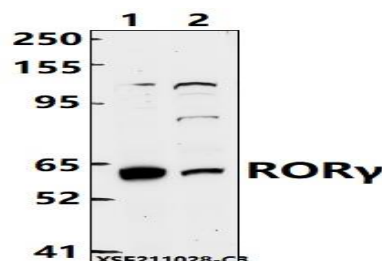
Storage&Stability:

Store at 4 °C short term. Aliquot and store at -20 °C long term. Avoid freeze-thaw cycles.

Specificity:

ROR γ polyclonal antibody detects endogenous levels of ROR γ protein.

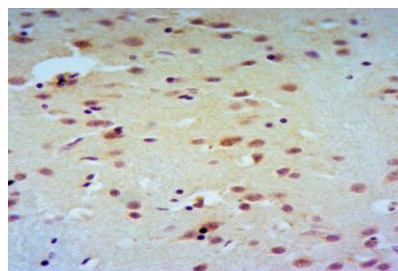
DATA:



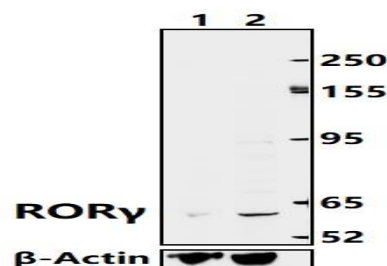
Western blot (WB) analysis of ROR γ polyclonal antibody at 1:1000 dilution

Lane1:HepG2 whole cell lysate(40ug)

Lane2:HEK293T whole cell lysate(40ug)



Immunohistochemistry of paraffin-embedded Human Brain using ROR γ antibody at dilution of 1:50.



Western blot (WB) analysis of ROR γ polyclonal antibody at 1:1000 dilution

Lane1:ROR γ knockdown A549 whole cell lysate(40ug)

Lane2:A549 whole cell lysate(40ug)

Note:

For research use only, not for use in diagnostic procedure.

