

## RPL17 polyclonal antibody

Catalog: BCP01456

Host: Rabbit

Reactivity: Human,Mouse,Rat

### BackGround:

Ribosomes, the organelles that catalyze protein synthesis, consist of a small 40S subunit and a large 60S subunit. Together these subunits are composed of 4 RNA species and approximately 80 structurally distinct proteins. RPL17 gene encodes a ribosomal protein that is a component of the 60S subunit belonging to the L22P family of ribosomal proteins. It is located in the cytoplasm.

### Product:

Rabbit IgG, 1mg/ml in PBS with 0.02% sodium azide, 50% glycerol, pH7.2

### Molecular Weight:

~ 21 kDa

### Swiss-Prot:

P18621

### Purification&Purity:

The antibody was affinity-purified from rabbit antiserum by affinity-chromatography using epitope-specific immunogen and the purity is > 95% (by SDS-PAGE).

### Applications:

WB: 1:500~1:1000

### Storage&Stability:

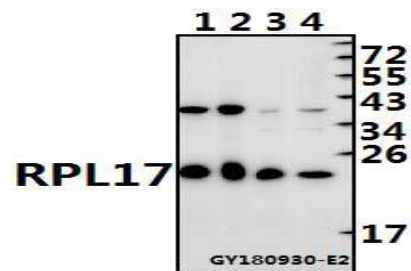
Store at 4 °C short term. Aliquot and store at -20 °C long

term. Avoid freeze-thaw cycles.

### Specificity:

RPL17 polyclonal antibody detects endogenous levels of RPL17 protein.

### DATA:



Western blot (WB) analysis of RPL17 polyclonal antibody at 1:500 dilution

Lane1:PC12 whole cell lysate(40ug)

Lane2:The Lung tissue lysate of Mouse(20ug)

Lane3:L02 whole cell lysate(20ug)

Lane4:Panc1 whole cell lysate(20ug)

### Note:

For research use only, not for use in diagnostic procedure.