

RPL22 polyclonal antibody

Catalog: BCP01458

Host: Rabbit

Reactivity: Human, Mouse

BackGround:

Ribosomal Protein L22 is also known as heparin-binding protein HBp15, because it binds heparin in the submandibular gland and brain. This small protein is also associated with two small nuclear RNAs called EBERs (Epstein-Barr encoded RNAs). These RNAs are synthesized in large amounts by human B lymphocytes infected with Epstein-Barr virus (EBV). Ribosomal protein L22, like L4, contains a globular domain that sits on the surface of the large ribosomal subunit and an extended loop that penetrates its core. These extensions contact multiple domains of 23S rRNA, indicating a potential, but not essential, role in rRNA folding during ribosomal assembly.

Product:

Rabbit IgG, 1mg/ml in PBS with 0.02% sodium azide, 50% glycerol, pH7.2

Molecular Weight:

~ 15 kDa

Swiss-Prot:

P35268

Purification&Purity:

The antibody was affinity-purified from rabbit antiserum by affinity-chromatography using epitope-specific immunogen and the purity is > 95% (by SDS-PAGE).

Applications:

WB: 1:500~1:1000

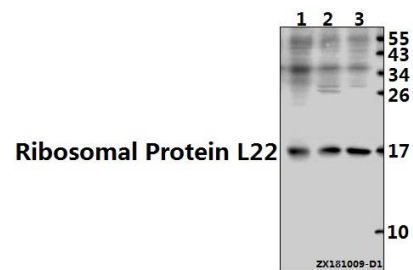
Storage&Stability:

Store at 4 °C short term. Aliquot and store at -20 °C long term. Avoid freeze-thaw cycles.

Specificity:

RPL22 polyclonal antibody detects endogenous levels of RPL22 protein.

DATA:



Western blot (WB) analysis of Ribosomal Protein L22 (L91) pAb at 1:500 dilution

Lane1:CT26 whole cell lysate(40ug)

Lane2:Myla2059 whole cell lysate(30ug)

Lane3:A2780 whole cell lysate(40ug)

Note:

For research use only, not for use in diagnostic procedure.