

RUNX1 (phospho-S276) polyclonal antibody

Catalog: BCP01484

Host: Rabbit

Reactivity: Human, Mouse, Rat

BackGround:

AML1 (also known as Runx1, CBFA2, and PEBP2 α B) is a member of the core binding factor (CBF) family of transcription factors. It is required for normal development of all hematopoietic lineages. AML1 forms a heterodimeric DNA binding complex with its partner protein CBF β and regulates the expression of cellular genes by binding to promoter and enhancer elements. AML1 is commonly translocated in hematopoietic cancers: chromosomal translocations include t(8;21) AML1-ETO, t(12;21) TEL-AML, and t(8;21) AML-M2. Phosphorylation of AML1 on several potential serine and threonine sites, including Ser249, is thought to occur in an Erk-dependent manner.

Product:

Rabbit IgG, 1mg/ml in PBS with 0.02% sodium azide, 50% glycerol, pH7.2

Molecular Weight:

~ 55 kDa

Swiss-Prot:

Q01196

Purification&Purity:

The antibody was affinity-purified from rabbit antiserum by affinity-chromatography using epitope-specific immunogen and the purity is > 95% (by SDS-PAGE).

Applications:

WB: 1:500~1:1000

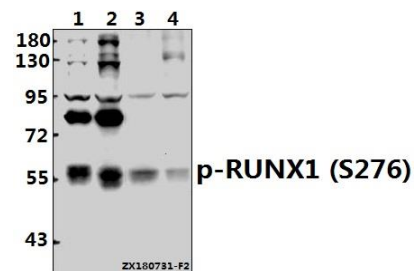
Storage&Stability:

Store at 4 °C short term. Aliquot and store at -20 °C long term. Avoid freeze-thaw cycles.

Specificity:

RUNX1 (phospho-S276) polyclonal antibody detects endogenous levels of RUNX1 protein only when phosphorylated at Ser276.

DATA:



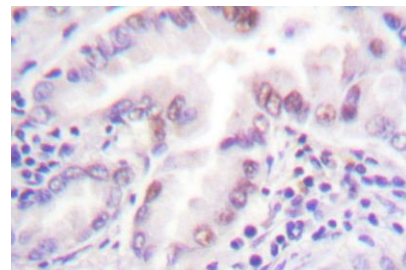
Western blot (WB) analysis of p-RUNX1 (S276) pAb at 1:500 dilution

Lane1: Myla2059 whole cell lysate(30ug)

Lane2: K562 whole cell lysate(40ug)

Lane3: The Thymus tissue lysate of Rat(40ug)

Lane4: 3T3-L1 whole cell lysate(40ug)



Note:

For research use only, not for use in diagnostic procedure.