

SAE2 (S621) polyclonal antibody

Catalog: BCP01487

Host: Rabbit

Reactivity: Human, Mouse, Rat

Background:

The human Ubiquitin Activating domain 2 (UBA2) gene is located on chromosome 19q12. Human UBA2 could form a beta mercaptoethanol-sensitive conjugate with members of the sentrin family, but not with ubiquitin of NEDD8 in the presence of AOS1. The recombinant proteins, Sua1p and hUba2, form a complex. In this complex, hUba2 binds SUMO-1, which gives the complex the activity of the SUMO-1 activating enzyme. Therefore, UBA2 has been found to be a component of the sentrin-activating enzyme complex.

Product:

Rabbit IgG, 1mg/ml in PBS with 0.02% sodium azide, 50% glycerol, pH7.2

Molecular Weight:

~ 90 kDa

Swiss-Prot:

Q9UBT2

Purification&Purity:

The antibody was affinity-purified from rabbit antiserum by affinity-chromatography using epitope-specific immunogen and the purity is > 95% (by SDS-PAGE).

Applications:

WB: 1:500~1:1000

IHC: 1:50~1:200

IF: 1:50~1:200

Storage&Stability:

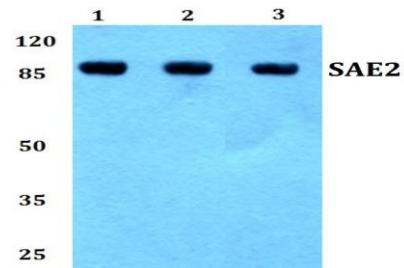
Store at 4 °C short term. Aliquot and store at -20 °C long term. Avoid freeze-thaw cycles.

Specificity:

Uba2 (S621) polyclonal antibody detects endogenous

levels of Uba2 protein.

DATA:



Western blot (WB) analysis of SAE2 (S621) polyclonal antibody at 1:500 dilution

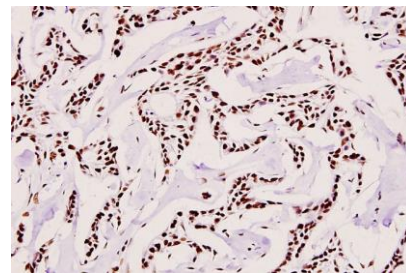
Lane1:A549 whole cell lysate(40ug)

Lane2:HEK293T whole cell lysate(40ug)

Lane3:H1792 whole cell lysate(40ug)

Lane4:PC12 whole cell lysate(40ug)

Lane5:BV2 whole cell lysate(40ug)



Immunohistochemistry (IHC) analyzes of SAE2 (S621) pAb in paraffin-embedded human breast carcinoma tissue at 1:100.

Note:

For research use only, not for use in diagnostic procedure.