

Septin 7 (M368) polyclonal antibody

Catalog: BCP01500

Host: Rabbit

Reactivity: Human,Mouse,Rat

BackGround:

The septins are a family of GTPase enzymes, some of which are required for cytokinesis and others of which are associated with exocytosis. Members of the septin family can form heteropolymer complexes and also play a role in the organization of new growth in organisms. The transcriptional regulation of all septins is complex, resulting in alternatively spliced variants. At least three septins (Septin 1, 2 and 4) are associated with a Tau-based paired helical filament core and may contribute to the formation of neurofibrillary tangle as integral constituents of paired helical filaments. Septin 3 (G-Septin), a GTP-binding protein, is highly expressed in brain and is regulated by protein kinase G in neurons.

Product:

Rabbit IgG, 1mg/ml in PBS with 0.02% sodium azide, 50% glycerol, pH7.2

Molecular Weight:

~ 51 kDa

Swiss-Prot:

Q16181

Purification&Purity:

The antibody was affinity-purified from rabbit antiserum by affinity-chromatography using epitope-specific immunogen and the purity is > 95% (by SDS-PAGE).

Applications:

WB: 1:500~1:1000

IHC: 1:50~1:200

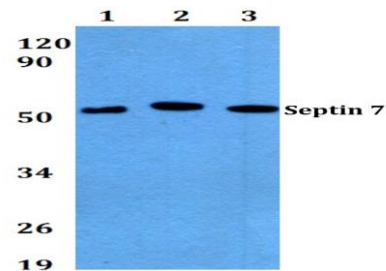
Storage&Stability:

Store at 4 °C short term. Aliquot and store at -20 °C long term. Avoid freeze-thaw cycles.

Specificity:

Septin 7 (M368) polyclonal antibody detects endogenous levels of Septin 7 protein.

DATA:



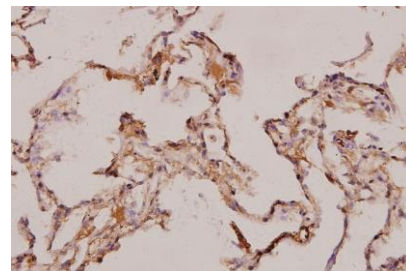
Western blot (WB) analysis of Septin 7 (M368) pAb at 1:500 dilution

Lane1:Hela whole cell lysate(40ug)

Lane2:HEK293T whole cell lysate(40ug)

Lane3:The Brain tissue lysate of Mouse(40ug)

Lane4:The Brain tissue lysate of Rat(40ug)



Immunohistochemistry (IHC) analyzes of Septin 7 (M368) pAb in paraffin-embedded human lung carcinoma tissue at 1:100.

Note:

For research use only, not for use in diagnostic procedure.