

## Shc (phospho-Y349) polyclonal antibody

Catalog: BCP01510

Host: Rabbit

Reactivity: Human,Mouse,Rat

### BackGround:

Critical components of this process include adapter proteins such as Shc and IRS-1 that lack detectable catalytic activity. These are immediate substrates of receptor tyrosine kinase activity and serve to physically link activated receptors to downstream signaling components. Whereas Shc has been implicated in signaling by diverse receptor families, IRS-1 serves primarily as the major insulin receptor substrate. Shc also participates in insulin signaling by linking the insulin receptor to Ras by forming complexes with the adapter protein GRB2 and Sos independently of IRS-1. A protein immunologically related to IRS-1, originally designated 4PS and now known as IRS-2, was shown to become highly tyrosine phosphorylated in response to IL-4 or IGF-1 in cells lacking IRS-1. An additional member of this family of signaling intermediates, Shb, is a SH2-containing protein with characteristic proline-rich domains.

### Product:

Rabbit IgG, 1mg/ml in PBS with 0.02% sodium azide, 50% glycerol, pH7.2

### Molecular Weight:

~ 46, 52, 66 kDa

### Swiss-Prot:

P29353

### Purification&Purity:

The antibody was affinity-purified from rabbit antiserum by affinity-chromatography using epitope-specific immunogen and the purity is > 95% (by SDS-PAGE).

### Applications:

WB: 1:500~1:1000

IHC: 1:50~1:200

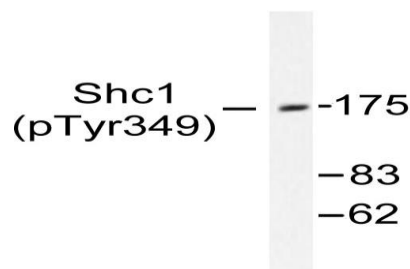
### Storage&Stability:

Store at 4 °C short term. Aliquot and store at -20 °C long term. Avoid freeze-thaw cycles.

### Specificity:

p-Shc (Y349) polyclonal antibody detects endogenous levels of Shc protein only when phosphorylated at Tyr349.

### DATA:



Western blot (WB) analysis of p-Shc (Y349) pAb at 1:500 dilution

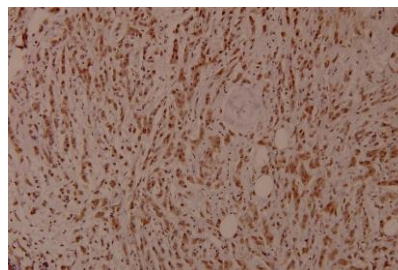
Lane1:HEK293T whole cell lysate

Lane2:HEK293T treated with EGF(100ng/ml,15 minutes) whole cell lysate

Lane3:HEK293T treated with EGF(100ng/ml,30 minutes) whole cell lysate

Lane4:The Kidney tissue lysate of Mouse

Lane5:The Kidney tissue lysate of Rat



Immunohistochemistry (IHC) analyzes of p-Shc (Y349) pAb in paraffin-embedded human breast carcinoma tissue at 1:100.

### Note:

For research use only, not for use in diagnostic procedure.