

## SHP-2 (S350) polyclonal antibody

Catalog: BCP01516

Host: Rabbit

Reactivity: Human, Mouse, Rat

### BackGround:

Several groups have independently identified a non-transmembrane PTP, designated SH-PTP1 (also known as PTP1C, HCP and SHP), which is primarily expressed in hematopoietic cells and characterized by the presence of two SH2 domains N-terminal to the PTP domain. SH2 domains generally mediate the association of regulatory molecules with specific phosphotyrosine-containing sites on autophosphorylated receptors, thereby controlling the initial interaction of receptors with these substrates. A second and much more widely expressed PTP with SH2 domains, SH-PTP2 (also designated PTP1D and Syp), has been identified. Strong sequence similarity between SH-PTP2 and the Drosophila gene corkscrew (CSW) and their similar patterns of expression suggest that SH-PTP2 is the human corkscrew homolog.

### Product:

Rabbit IgG, 1mg/ml in PBS with 0.02% sodium azide, 50% glycerol, pH7.2

### Molecular Weight:

~70 kDa

### Swiss-Prot:

Q06124

### Purification&Purity:

The antibody was affinity-purified from rabbit antiserum by affinity-chromatography using epitope-specific immunogen and the purity is > 95% (by SDS-PAGE).

### Applications:

WB: 1:500~1:1000

IHC: 1:50~1:200

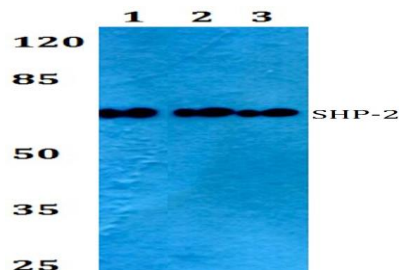
### Storage&Stability:

Store at 4 °C short term. Aliquot and store at -20 °C long term. Avoid freeze-thaw cycles.

### Specificity:

SHP-2 (S350) polyclonal antibody detects endogenous levels of SHP-2 protein.

### DATA:



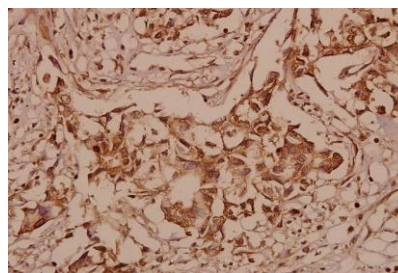
Western blot (WB) analysis of SHP-2 (K536) polyclonal antibody at 1:500 dilution

Lane1:MCF-7 whole cell lysate(40ug)

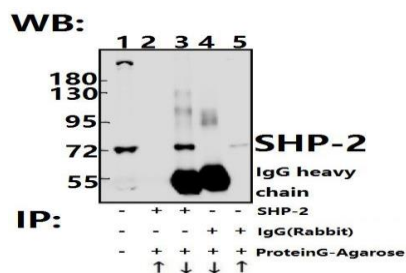
Lane2:A549 whole cell lysate(40ug)

Lane3:CT26 whole cell lysate(40ug)

Lane4:PC12 whole cell lysate(40ug)



Immunohistochemistry (IHC) analyzes of SHP-2 (S350) pAb in paraffin-embedded human breast carcinoma tissue at 1:50.



Immunoprecipitation of L02 cell lysate using SHP-2 (S350) pAb (Sepharose Bead Conjugate) #BD0048(lane 2 and lane 3) and Nonspecific IgG Control (Sepharose Bead Conjugate)#BD0047 (lane 4 and lane 5). Lane 1 is 30% input. The western blot was probed using SHP-2 (S350) pAb #BS1323. “↑” (supernatant) ; “↓” (deposition)

### Note:

For research use only, not for use in diagnostic procedure.