

SKIL (D652) polyclonal antibody

Catalog: BCP01521

Host: Rabbit

Reactivity: Human,Rat

BackGround:

Transforming growth factor- β (TGF- β) superfamily members are critical regulators of cell proliferation and differentiation, developmental patterning and morphogenesis and disease pathogenesis. Upon stimulation by TGF- β , activated receptors phosphorylate Smad2 and Smad3, resulting in their translocation to the nucleus, association with Smad4 and transcriptional regulation of target genes. Ski and SnoN are related oncoproteins originally discovered based on homology to v-Ski, the transforming protein of the Sloan-Kettering virus. They regulate TGF- β signaling by binding to Smad2 and Smad4 and repressing their ability to activate transcription. Following TGF- β stimulation, SnoN is rapidly degraded by the ubiquitin proteasome pathway providing negative feedback regulation. Overexpression of SnoN and Ski can transform avian fibroblasts and induce muscle differentiation. Mice heterozygous for SnoN and Ski display increased susceptibility to tumorigenesis. Interestingly, elevated expression of Ski and SnoN has been observed in many tumors and may serve as important prognostic markers. Taken together, these studies suggest possible dual functions of these proteins at different stages of tumorigenesis.

Product:

Rabbit IgG, 1mg/ml in PBS with 0.02% sodium azide, 50% glycerol, pH7.2.

Molecular Weight:

~ 80 kDa

Swiss-Prot:

P12757

Purification&Purity:

The antibody was affinity-purified from rabbit antiserum by affinity-chromatography using epitope-specific immunogen and the purity is > 95% (by SDS-PAGE).

Applications:

WB: 1:5000~1:10000

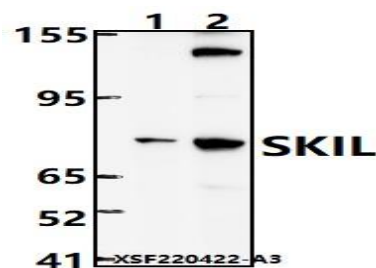
Storage&Stability:

Store at 4 °C short term. Aliquot and store at -20 °C long term. Avoid freeze-thaw cycles.

Specificity:

SKIL (D652) polyclonal antibody detects endogenous levels of SKIL protein.

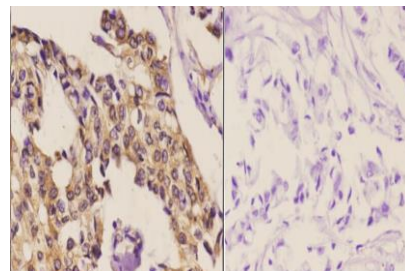
DATA:



Western blot (WB) analysis of SKIL (D652) polyclonal antibody at 1:5000 dilution

Lane1:Hela whole cell lysate(40ug)

Lane2:PC12 whole cell lysate(40ug)



Note:

For research use only, not for use in diagnostic procedure.