

SLC22A3 (Q306) polyclonal antibody

Catalog: BCP01524

Host: Rabbit

Reactivity: Human,Mouse,Rat

BackGround:

Organic cation transporters (OCT) are expressed in the plasma membrane of epithelial cells from a wide range of tissues, where they function in the elimination of endogenous amines, cationic drugs and other xenobiotics. The structure of OCTs consists of a 12-transmembrane-domain structure and a large extracellular hydrophilic loop. In humans, OCT1 is primarily expressed in the liver while OCT2 is expressed in the kidney. OCT3 is expressed in the placenta, skeletal muscle, prostate, aorta and liver. OCT3, also known as extraneuronal monoamine transporter, is widely expressed in different regions of the brain including the hippocampus, cerebellum and cerebral cortex. OCT3 mediates the uptake of several neuroactive agents, including dopamine, and may play an important role in the disposition of neurotransmitters and cationic neurotoxins in the brain.

Product:

Rabbit IgG, 1mg/ml in PBS with 0.02% sodium azide, 50% glycerol, pH7.2

Molecular Weight:

~ 61 kDa

Swiss-Prot:

O75751

Purification&Purity:

The antibody was affinity-purified from rabbit antiserum by affinity-chromatography using epitope-specific immunogen and the purity is > 95% (by SDS-PAGE).

Applications:

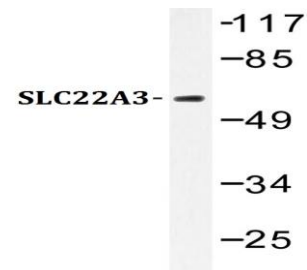
WB: 1:500~1:1000

Storage&Stability:

Store at 4 °C short term. Aliquot and store at -20 °C long term. Avoid freeze-thaw cycles.

Specificity:

SLC22A3 (Q306) polyclonal antibody detects endogenous levels of SLC22A3 protein.

DATA:

Western blot (WB) analysis of SLC22A3 (Q306) polyclonal antibody at 1:500 dilution

Lane1:786-O whole cell lysate(40ug)

Lane2:L02 whole cell lysate(40ug)

Lane3:HEK293T whole cell lysate(40ug)

Note:

For research use only, not for use in diagnostic procedure.