

SLC25A5 polyclonal antibody

Catalog: BCP01526

Host: Rabbit

Reactivity: Human, Mouse

BackGround:

Adenine nucleotide translocase 2 (ANT2/SLC25A5) is a member of the adenine nucleotide translocase family of mitochondrial inner membrane proteins that function differently in metabolic and apoptotic pathways. Research studies indicate that ANT2 expression in undifferentiated, proliferating cells correlates with the rate of glycolytic metabolism and may be an indicator of carcinogenesis. Suppression of ANT2/SLC25A5 expression by specific RNA interference in human breast cancer cells promotes apoptosis and inhibits tumor cell growth, which suggests a cytoprotective role of ANT2/SLC25A5.

Product:

Rabbit IgG, 1mg/ml in PBS with 0.02% sodium azide, 50% glycerol, pH7.2.

Molecular Weight:

~ 35 kDa

Swiss-Prot:

P05141

Purification&Purity:

The antibody was affinity-purified from rabbit antiserum by affinity-chromatography using epitope-specific immunogen and the purity is > 95% (by SDS-PAGE).

Applications:

WB: 1:1000~1:2000

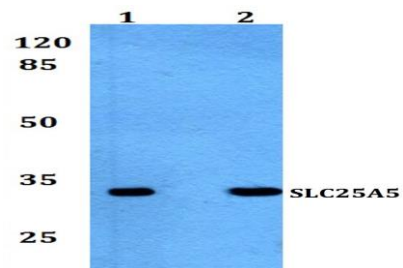
Storage&Stability:

Store at 4 °C short term. Aliquot and store at -20 °C long term. Avoid freeze-thaw cycles.

Specificity:

SLC25A5 polyclonal antibody detects endogenous levels of SLC25A5 protein.

DATA:



Western blot (WB) analysis of SLC25A5 polyclonal antibody at 1:1000 dilution

Lane1:A549 whole cell lysate(30ug)

Lane2:HEK293T whole cell lysate(30ug)

Lane3:SGC7901 whole cell lysate(30ug)

Lane4:CT-26 whole cell lysate(30ug)

Note:

For research use only, not for use in diagnostic procedure.