

## Smad2/3 (phospho-T8) polyclonal antibody

Catalog: BCP01534

Host: Rabbit

Reactivity: Human, Mouse, Rat

### BackGround:

Smad proteins, the mammalian homologs of the Drosophila mothers against decapentaplegic (Mad), have been implicated as downstream effectors of GF $\beta$ /BMP signaling. Smad1 (also designated Madr1 or JV4-1) and Smad5 are effectors of BMP-2 and BMP-4 function, while Smad2 (also designated Madr2 or JV18-1) and Smad3 are involved in TGF $\beta$  and activin-mediated growth modulation. Smad4 (also designated DPC4) has been shown to mediate all of the above activities through interaction with various Smad family members. Smad6 and Smad7 regulate the response to activin/TGF $\beta$  signaling by interfering with TGF $\beta$ -mediated phosphorylation of other Smad proteins.

### Product:

Rabbit IgG, 1mg/ml in PBS with 0.02% sodium azide, 50% glycerol, pH7.2

### Molecular Weight:

~ 55,60 kDa

### Swiss-Prot:

P84022/Q15796

### Purification&Purity:

The antibody was affinity-purified from rabbit antiserum by affinity-chromatography using epitope-specific immunogen and the purity is > 95% (by SDS-PAGE).

### Applications:

WB: 1:1000~1:2000

IF: 1:50~1:200

IP: 1:50~1:200

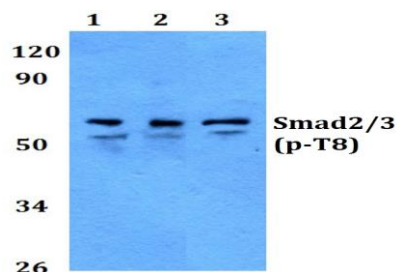
### Storage&Stability:

Store at 4 °C short term. Aliquot and store at -20 °C long term. Avoid freeze-thaw cycles.

### Specificity:

p-Smad2/3 (T8) polyclonal antibody detects endogenous levels of Smad2/3 protein only when phosphorylated at Thr8.

### DATA:

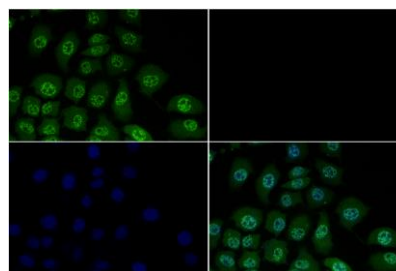


Western blot (WB) analysis of Smad2/3 (phospho-T8) polyclonal antibody at 1:500 dilution

Lane1:HEK293T whole cell lysate

Lane2:HEK293T treated with TNF $\alpha$ (20ng/ml)for 10 min whole cell lysate

Lane3:The Heart tissue lysate of Mouse



Immunofluorescence analysis of A549 cells using Smad2/3 (phospho-T8) polyclonal antibody at dilution of 1:200.

Immunoprecipitation of A549 cell lysates using Smad2/3 (phospho-T8) pAb (Sepharose Bead Conjugate)#BD0048 (lane 2 and lane 3) and Nonspecific IgG Control (Sepharose Bead Conjugate)#BD0048 (lane 4). Lane 1 is 30% input. The western blot was probed using Smad2/3 (phospho-T8) pAb.

### Note:

For research use only, not for use in diagnostic procedure.