

## Smad4 (L43) polyclonal antibody

Catalog: BCP01540

Host: Rabbit

Reactivity: Human, Mouse, Rat

### BackGround:

Smad proteins, the mammalian homologs of the *Drosophila* Mothers against dpp (Mad) have been implicated as downstream effectors of TGF $\beta$ /BMP signaling. Smad1 (also designated Madr1 or JV4-1), Smad5 and mammalian Smad8 (also designated Smad9 or MadH6) are effectors of BMP2 and BMP4 function while Smad2 (also designated Madr2 or JV18-1) and Smad3 are involved in TGF $\beta$  and activin-mediated growth modulation. Smad4 (also designated DPC4) has been shown to mediate all of the above activities through interaction with various Smad family members. Smad6 and Smad7 regulate the response to activin/TGF $\beta$  signaling by interfering with TGF $\beta$ -mediated phosphorylation of other Smad family members.

### Product:

Rabbit IgG, 1mg/ml in PBS with 0.02% sodium azide, 50% glycerol, pH7.2

### Molecular Weight:

~ 75 kDa

### Swiss-Prot:

Q13485

### Purification&Purity:

The antibody was affinity-purified from rabbit antiserum by affinity-chromatography using epitope-specific immunogen and the purity is > 95% (by SDS-PAGE).

### Applications:

WB: 1:10000~1:20000

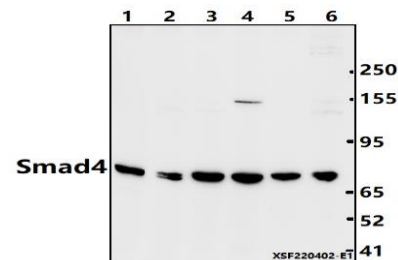
### Storage&Stability:

Store at 4 °C short term. Aliquot and store at -20 °C long term. Avoid freeze-thaw cycles.

### Specificity:

Smad4 (L43) polyclonal antibody detects endogenous levels of Smad4 protein.

### DATA:



Western blot (WB) analysis of Smad4 (L43) polyclonal antibody at 1:10000 dilution

Lane1:HeLa whole cell lysate(40ug)

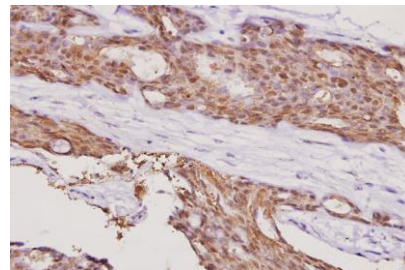
Lane2:A549 whole cell lysate(40ug)

Lane3:BV2 whole cell lysate(40ug)

Lane4:PC12 whole cell lysate(40ug)

Lane5:THP-1 whole cell lysate(40ug)

Lane6:HepG2 whole cell lysate(40ug)



### Note:

For research use only, not for use in diagnostic procedure.