

Sp3/4 (G659) polyclonal antibody

Catalog: BCP01547

Host: Rabbit

Reactivity: Human,Mouse,Rat

BackGround:

The Sp transcription factor family includes Sp1, Sp2, Sp3 (SPR-2) and Sp4(SPR-1). Sp transcription factors share similar structures but do not share similar functions. All four proteins contain a highly conserved DNA-binding domain composed of three zinc fingers at the C-terminus. Sp family members bind the consensus sequence GGGGCGGGGC and other closely related sequences which are known as GC boxes. Sp1, Sp3 and Sp4 share a high affinity for GC boxes while Sp2 does not. Sp2 only weakly binds to GT boxes. Sp1, Sp2 and Sp3 are ubiquitously expressed, while Sp4 is abundantly expressed in brain with limited expression in other tissues. Sp1 and Sp3, but not Sp2 or Sp4, interact with E2, a regulatory element for the β 4 subunit of neuronal nicotinic acetylcholine receptors. Sp3 is the only Sp member to inhibit Sp1 and Sp4 mediated transcription.

Product:

Rabbit IgG, 1mg/ml in PBS with 0.02% sodium azide, 50% glycerol, pH7.2

Molecular Weight:

~ 85 kDa

Swiss-Prot:

Q02447/Q02446

Purification&Purity:

The antibody was affinity-purified from rabbit antiserum by affinity-chromatography using epitope-specific immunogen and the purity is > 95% (by SDS-PAGE).

Applications:

WB: 1:500~1:1000

IHC: 1:50~1:200

IF: 1:50~1:200

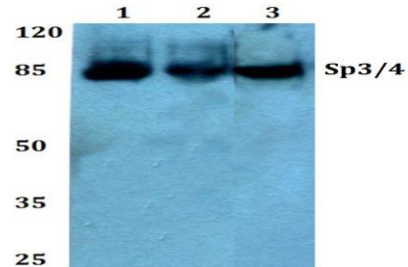
Storage&Stability:

Store at 4 °C short term. Aliquot and store at -20 °C long term. Avoid freeze-thaw cycles.

Specificity:

Sp3/4 (G659) polyclonal antibody detects endogenous levels of Sp3 and Sp4 protein.

DATA:



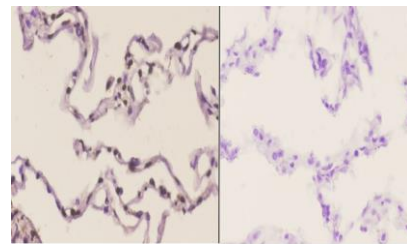
Western blot (WB) analysis of Sp3/4 (G659) pAb at 1:1000 dilution

Lane1:L02 whole cell lysate(20ug)

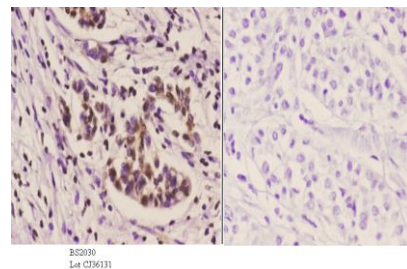
Lane2:MCF-7 whole cell lysate(20ug)

Lane3:H9C2 whole cell lysate(40ug)

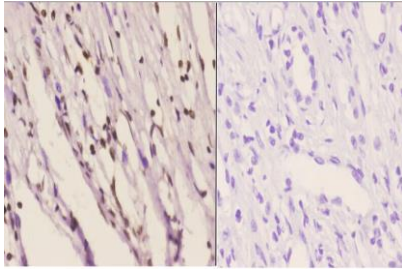
Lane4:MEF whole cell lysate(40ug)



Immunohistochemistry (IHC) analyzes of Sp3/4 (G659) pAb in paraffin-embedded human lung carcinoma tissue at 1:50, showing nucleus staining. Negative control (the right) Using PBS instead of primary antibody, secondary antibody is Goat Anti-Rabbit IgG-biotin followed by avidin-peroxidase.



Immunohistochemistry (IHC) analyzes of Sp3/4 (G659) pAb in paraffin-embedded human liver carcinoma tissue at 1:50, showing nucleus staining. Negative control (the right) Using PBS instead of primary antibody, secondary antibody is Goat Anti-Rabbit IgG-biotin followed by avidin-peroxidase.



Immunohistochemistry (IHC) analyzes of Sp3/4 (G659) pAb in paraffin-embedded human kidney carcinoma tissue at 1:50, showing Nucleus staining. Negative control (the right) Using PBS instead of primary antibody, secondary antibody is Goat Anti-Rabbit IgG-biotin followed by avidin-peroxidase.

Note:

For research use only, not for use in diagnostic procedure.