

**SRF (G93) polyclonal antibody**

Catalog: BCP01554

Host: Rabbit

Reactivity: Human,Mouse,Rat

**BackGround:**

Serum response factor (SRF) is a transcription factor that binds the serum response element (SRE), a sequence that mediates the transient response of many cellular genes to growth stimulation. SRF-binding sites are also constitutive promotor elements in many muscle-specific promoters. At the c-Fos SRE, formation of a ternary complex containing SRF and its accessory protein p62TCF appears to be important for signal transduction. Two related Ets domain proteins, Elk-1 and SRF accessory protein-1 (SAP-1) have DNA binding properties identical to that of p62TCF. Elk-1 and SAP-1 contain two homologous regions of which the two amino-terminal regions, the Ets domain (box A) and the B box, mediate ternary complex formation with SRF.

**Product:**

Rabbit IgG, 1mg/ml in PBS with 0.02% sodium azide, 50% glycerol, pH7.2

**Molecular Weight:**

~52 kDa

**Swiss-Prot:**

P11831

**Purification&Purity:**

The antibody was affinity-purified from rabbit antiserum by affinity-chromatography using epitope-specific immunogen and the purity is > 95% (by SDS-PAGE).

**Applications:**

WB: 1:500~1:1000

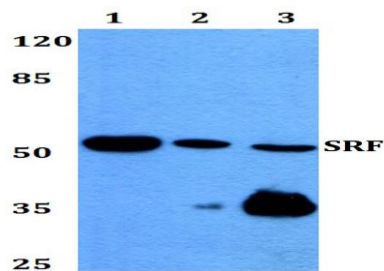
IHC: 1:50~1:200

**Storage&Stability:**

Store at 4 °C short term. Aliquot and store at -20 °C long term. Avoid freeze-thaw cycles.

**Specificity:**

SRF (G93) polyclonal antibody detects endogenous levels of SRF protein.

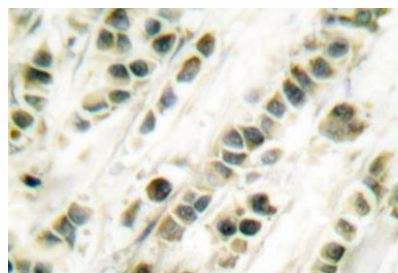
**DATA:**

Western blot (WB) analysis of SRF (G93) polyclonal antibody at 1:500 dilution

Lane1:HEK293T whole cell lysate

Lane2:NIH-3T3 whole cell lysate

Lane3:H9C2 whole cell lysate



Immunohistochemistry (IHC) analyzes of SRF (G93) pAb in paraffin-embedded human breast carcinoma tissue.

**Note:**

For research use only, not for use in diagnostic procedure.