

SRp20 (F151) polyclonal antibody

Catalog: BCP01557

Host: Rabbit

Reactivity: Human, Mouse, Rat

BackGround:

The majority of SR proteins, including SC35 and SRp40, are confined to the nucleus, while SF2/ASF, SRp20, and 9G8 are continuously shuttled between the nucleus and the cytoplasm and contribute to mRNA transport. The activity of SR proteins in regulated splicing is antagonized by members of the hnRNP A/B family of proteins, which induce drastic shifts in the selection of splicing sites. An additional SR-associated protein, p32, tightly associates with SR factors and preferentially inhibits ASF/SF2 functioning as both a splicing enhancer and splicing repressor protein by preventing the stable interaction of ASF/SF2 and RNA.

Product:

Rabbit IgG, 1mg/ml in PBS with 0.02% sodium azide, 50% glycerol, pH7.2

Molecular Weight:

~ 25 kDa

Swiss-Prot:

P84103

Purification&Purity:

The antibody was affinity-purified from rabbit antiserum by affinity-chromatography using epitope-specific immunogen and the purity is > 95% (by SDS-PAGE).

Applications:

WB: 1:500~1:1000

IHC: 1:50~1:200

IF: 1:50~1:200

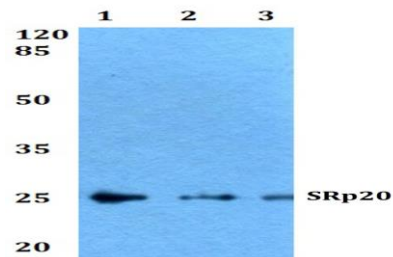
Storage&Stability:

Store at 4 °C short term. Aliquot and store at -20 °C long term. Avoid freeze-thaw cycles.

Specificity:

SRp20 (F151) polyclonal antibody detects endogenous levels of SRp20 protein.

DATA:



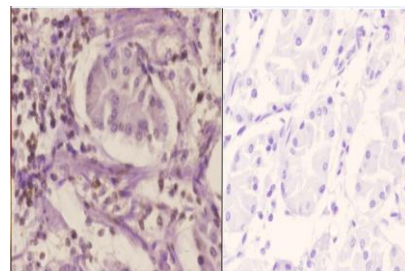
Western blot (WB) analysis of SRp20 (F151) pAb at 1:500 dilution

Lane1:U-87MG whole cell lysate(40ug)

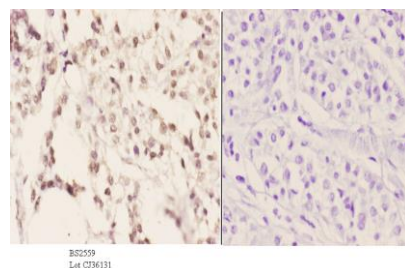
Lane2:Jurkat whole cell lysate(40ug)

Lane3:C6 whole cell lysate(40ug)

Lane4:BV2 whole cell lysate(40ug)



Immunohistochemistry (IHC) analyzes of SRp20 (F151) pAb in paraffin-embedded human stomach carcinoma tissue at 1:50. showing nucleus staining. Negative control (the right) Using PBS instead of primary antibody, secondary antibody is Goat Anti-Rabbit IgG-biotin followed by avidin-peroxidase.



Immunohistochemistry (IHC) analyzes of SRp20 (F151) pAb in paraffin-embedded human liver carcinoma tissue at 1:50. showing nucleus staining. Negative control (the right) Using PBS instead of primary antibody, secondary antibody is Goat Anti-Rabbit IgG-biotin followed by avidin-peroxidase.

Note:

For research use only, not for use in diagnostic procedure.