

SSB (T362) polyclonal antibody

Catalog: BCP01561

Host: Rabbit

Reactivity: Human, Mouse, Rat

BackGround:

Ro/SSA is a ribonucleoprotein that binds to autoantibodies in 35 to 50% of patients with SLE and in up to 97% of patients with Sjogren syndrome. The Ro/SSA particle consists of a single immunoreactive protein noncovalently bound with one of four small RNA molecules. Most anti-Ro/SSA-positive sera have antibodies not only against the immunoreactive protein, but also against an Ro/SSA protein. The genes which encode the two proteins map to human chromosomes 11p15.5 and 1q31, respectively. La/SSB is an autoimmune RNA-binding protein that plays a role in the transcription of RNA polymerase III was originally defined by its reactivity with autoantibodies from patients with Sjogren syndrome and SLE.

Product:

Rabbit IgG, 1mg/ml in PBS with 0.02% sodium azide, 50% glycerol, pH7.2

Molecular Weight:

~50 kDa

Swiss-Prot:

P05455

Purification&Purity:

The antibody was affinity-purified from rabbit antiserum by affinity-chromatography using epitope-specific immunogen and the purity is > 95% (by SDS-PAGE).

Applications:

WB: 1:500~1:1000

IHC: 1:50~1:200

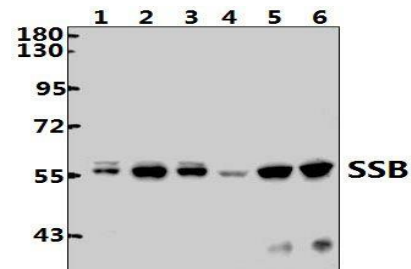
Storage&Stability:

Store at 4 °C short term. Aliquot and store at -20 °C long term. Avoid freeze-thaw cycles.

Specificity:

SSB (T362) polyclonal antibody detects endogenous levels of SSB protein.

DATA:



Western blot (WB) analysis of SSB (T362) pAb at 1:1000 dilution

Lane1:A2780 whole cell lysate(20ug)

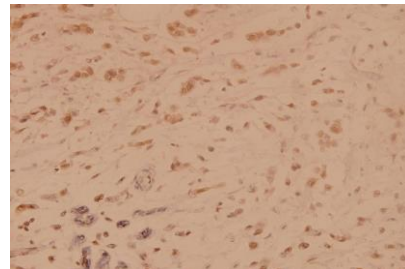
Lane2:PC3 whole cell lysate(20ug)

Lane3:L02 whole cell lysate(20ug)

Lane4:The Ovary tissue lysate of Rat(40ug)

Lane5:AML-12 whole cell lysate(40ug)

Lane6:3T3-L1 whole cell lysate(40ug)



Immunohistochemistry (IHC) analyzes of SSB (T362) pAb in paraffin-embedded human breast carcinoma tissue at 1:100.

Note:

For research use only, not for use in diagnostic procedure.