

Stat1 (phospho-Y701) polyclonal antibody

Catalog: BCP01566

Host: Rabbit

Reactivity: Human, Mouse, Rat

BackGround:

Signal transducer and activator of transcription that mediates signaling by interferons (IFNs). Following type I IFN (IFN- α and IFN- β) binding to cell surface receptors, Jak kinases (TYK2 and JAK1) are activated, leading to tyrosine phosphorylation of STAT1 and STAT2. The phosphorylated STATs dimerize, associate with ISGF3G/IRF-9 to form a complex termed ISGF3 transcription factor, that enters the nucleus. ISGF3 binds to the IFN stimulated response element (ISRE) to activate the transcription of interferon stimulated genes, which drive the cell in an antiviral state. In response to type II IFN (IFN- γ), STAT1 is tyrosine- and serine-phosphorylated. It then forms a homodimer termed IFN- γ -activated factor (GAF), migrates into the nucleus and binds to the IFN γ activated sequence (GAS) to drive the expression of the target genes, inducing a cellular antiviral state.

Product:

Rabbit IgG, 1mg/ml in PBS with 0.02% sodium azide, 50% glycerol, pH7.2

Molecular Weight:

~ 87 kDa

Swiss-Prot:

P42224

Purification&Purity:

The antibody was affinity-purified from rabbit antiserum by affinity-chromatography using epitope-specific immunogen and the purity is > 95% (by SDS-PAGE).

Applications:

WB: 1:500~1:1000

IHC: 1:50~1:200

IP: 1:50~1:200

Storage&Stability:

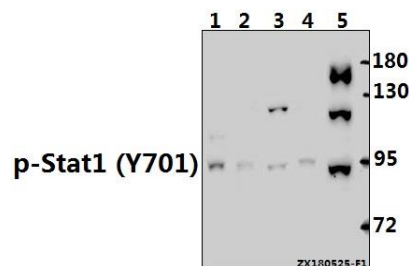
Store at 4 °C short term. Aliquot and store at -20 °C long

term. Avoid freeze-thaw cycles.

Specificity:

p-Stat1 (Y701) polyclonal antibody detects endogenous levels of Stat1 protein only when phosphorylated at Tyr701.

DATA:



Western blot (WB) analysis of p-Stat1 (Y701) pAb at 1:500 dilution

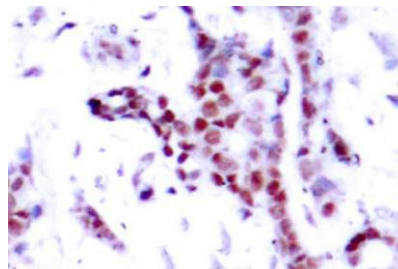
Lane1:U-87MG whole cell lysate(40ug)

Lane2:Hela whole cell lysate(40ug)

Lane3:PC12 whole cell lysate(40ug)

Lane4:The Embryo tissue lysate of Mouse(40ug)

Lane5:Panc1 whole cell lysate(40ug)



Immunohistochemistry (IHC) analyzes of p-Stat1 (Y701) pAb in paraffin-embedded human breast carcinoma tissue.

Note:

For research use only, not for use in diagnostic procedure.