

STAT2 polyclonal antibody

Catalog: BCP01568

Host: Rabbit

Reactivity: Human

BackGround:

Membrane receptor signaling by various ligands, including interferons and growth hormones such as EGF, induces activation of Jak kinases which then leads to tyrosine phosphorylation of the various Stat transcription factors. Stat1 and Stat2 are induced by IFN- α and form a heterodimer which is part of the ISGF3 transcription factor complex. Although early reports indicate Stat3 activation by EGF and IL-6, it has been shown that Stat3 β appears to be activated by both while Stat3 α is activated by EGF, but not by IL-6. Highest expression of Stat4 is seen in testis and myeloid cells. IL-12 has been identified as an activator of Stat4. Stat5 has been shown to be activated by prolactin and by IL-3. Stat6 is involved in IL-4 activated signaling pathways.

Product:

Rabbit IgG, 1mg/ml in PBS with 0.02% sodium azide, 50% glycerol, pH7.2

Molecular Weight:

~ 113 kDa

Swiss-Prot:

P52630

Purification&Purity:

The antibody was affinity-purified from rabbit antiserum by affinity-chromatography using epitope-specific immunogen and the purity is > 95% (by SDS-PAGE).

Applications:

WB:1:1000~1:2000

IP:1:50~1:200

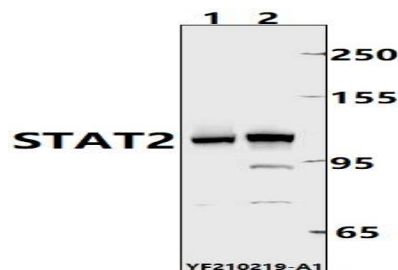
Storage&Stability:

Store at 4 °C short term. Aliquot and store at -20 °C long term. Avoid freeze-thaw cycles.

Specificity:

STAT2 polyclonal antibody detects endogenous levels of STAT2 protein.

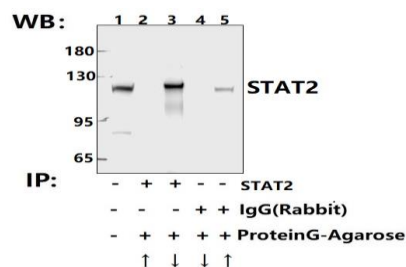
DATA:



Western blot (WB) analysis of Stat5a/b pAb at 1:1000 dilution

Lane1:HepG2 whole cell lysate(20ug)

Lane2:U-87MG whole cell lysate(20ug)



Immunoprecipitation of SGC7901 cell lysates using STAT2 pAb (Sepharose Bead Conjugate)#BD0048 (lane 2 and lane 3) and Nonspecific IgG Control (Sepharose Bead Conjugate)#BD0048 (lane 4 and lane 5). Lane 1 is 30% input. The western blot was probed using STAT2 pAb.

Note:

For research use only, not for use in diagnostic procedure.