

Sugen Kinase 288 (L341) polyclonal antibody

Catalog: BCP01584

Host: Rabbit

Reactivity: Human,Mouse,Rat

BackGround:

The protein encoded by this gene belongs to the Ser/Thr protein kinase family, and protein kinase superfamily involved in signal transduction pathways. This gene is closely linked to DRD2 gene (GeneID:1813) on chr 11, and a well studied restriction fragment length polymorphism (RFLP) designated TaqIA, was originally associated with the DRD2 gene, however, later was determined to be located in exon 8 of ANKK1 gene (PMIDs: 18621654, 15146457), where it causes a nonconservative amino acid substitution. It is not clear if this gene plays any role in neuropsychiatric disorders previously associated with Taq1A RFLP.

Product:

Rabbit IgG, 1mg/ml in PBS with 0.02% sodium azide, 50% glycerol, pH7.2

Molecular Weight:

~ 100 kDa

Swiss-Prot:

Q8NFD2

Purification&Purity:

The antibody was affinity-purified from rabbit antiserum by affinity-chromatography using epitope-specific immunogen and the purity is > 95% (by SDS-PAGE).

Applications:

WB: 1:500~1:1000

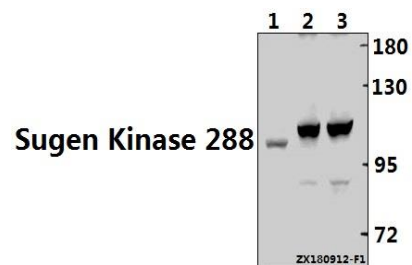
Storage&Stability:

Store at 4 °C short term. Aliquot and store at -20 °C long term. Avoid freeze-thaw cycles.

Specificity:

Sugen Kinase 288 (L341) polyclonal antibody detects endogenous levels of Sugem Kinase 288 protein.

DATA:



Western blot (WB) analysis of Sugem Kinase 288 (L341) polyclonal antibody at 1:500 dilution

Lane1:U-87MG whole cell lysate(40ug)

Lane2:The Brain tissue lysate of Mouse(40ug)

Lane3:The Brain tissue lysate of Rat(40ug)

Note:

For research use only, not for use in diagnostic procedure.