

TBX22 (A30) polyclonal antibody

Catalog: BCP01617

Host: Rabbit

Reactivity: Human,Mouse,Rat

BackGround:

The T-box (TBX) motif is present in a family of genes whose structural features and expression patterns support their involvement in developmental gene regulation. The TBX gene family are largely conserved throughout metazoan evolution, and these genes code for putative transcription factors that share a uniquely defining DNA-binding domain. TBX genes are a family of developmental regulators with more than 20 members recently identified in invertebrates and vertebrates. Mutations in TBX genes are associated with the onset of several human diseases.

Product:

Rabbit IgG, 1mg/ml in PBS with 0.02% sodium azide, 50% glycerol, pH7.2

Molecular Weight:

~ 58 kDa

Swiss-Prot:

Q9Y458

Purification&Purity:

The antibody was affinity-purified from rabbit antiserum by affinity-chromatography using epitope-specific immunogen and the purity is > 95% (by SDS-PAGE).

Applications:

WB: 1:500~1:1000

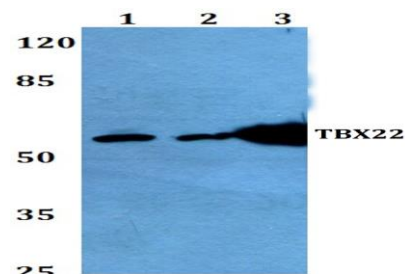
IHC: 1:50~1:200

Storage&Stability:

Store at 4 °C short term. Aliquot and store at -20 °C long term. Avoid freeze-thaw cycles.

Specificity:

TBX22 (A30) polyclonal antibody detects endogenous levels of TBX22 protein.

DATA:

Western blot (WB) analysis of TBX22 (A30) pAb at 1:500 dilution

Lane1:HepG2 whole cell lysate(40ug)

Lane2:HEK293T whole cell lysate(40ug)

Lane3:H9C2 whole cell lysate(40ug)

Lane4:The Testis tissue lysate of Mouse(40ug)

Note:

For research use only, not for use in diagnostic procedure.