

TCF-4/12 (S616) polyclonal antibody

Catalog: BCP01620

Host: Rabbit

Reactivity: Human,Mouse,Rat

BackGround:

T cell factors (TCFs) comprise a family of DNA-binding transcriptional activators that are essential for lymphoid cell development. These transcription factors are activated by the Wnt-1 and Wingless pathways and are characterized by the presence of a conserved protein motif, the high mobility group (HMG) 1 box, which mediates DNA binding. TCF-4 mainly localizes in the cytoplasm and is transported into the nucleus directly bound to β -catenin in a cooperative manner. This TCF-4/ β -catenin complex induces expression of Wnt target genes, including multiple cancer-associated genes.

Product:

Rabbit IgG, 1mg/ml in PBS with 0.02% sodium azide, 50% glycerol, pH7.2

Molecular Weight:

~ 60, 72 kDa

Swiss-Prot:

P15884/Q99081

Purification&Purity:

The antibody was affinity-purified from rabbit antiserum by affinity-chromatography using epitope-specific immunogen and the purity is > 95% (by SDS-PAGE).

Applications:

WB: 1:500~1:1000

IHC: 1:50~1:200

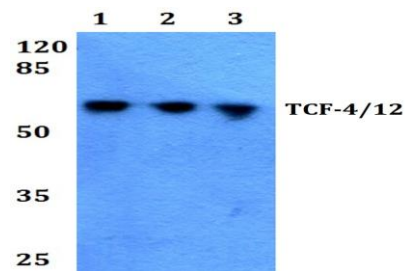
Storage&Stability:

Store at 4 °C short term. Aliquot and store at -20 °C long term. Avoid freeze-thaw cycles.

Specificity:

TCF-4/12 (S616) polyclonal antibody detects endogenous levels of TCF-4, and also detects TCF-12 protein.

DATA:



Western blot (WB) analysis of TCF-4/12 (S616) pAb at 1:500 dilution

Lane1:SGC7901 whole cell lysate(20ug)

Lane2:HepG2 whole cell lysate(40ug)

Lane3:Jurkat whole cell lysate(40ug)

Lane4:A549 whole cell lysate(40ug)

Lane5:PMVEC whole cell lysate(40ug)

Lane6:AML-12 whole cell lysate(40ug)

Immunohistochemistry (IHC) analyzes of TCF-4/12 (S616) pAb in paraffin-embedded human brain tissue.

Note:

For research use only, not for use in diagnostic procedure.